

# ℞. Angelus ad pastores ait

		H 0	
Mode		Rom1	0
CAO	6088	Rom2	0
		F	L

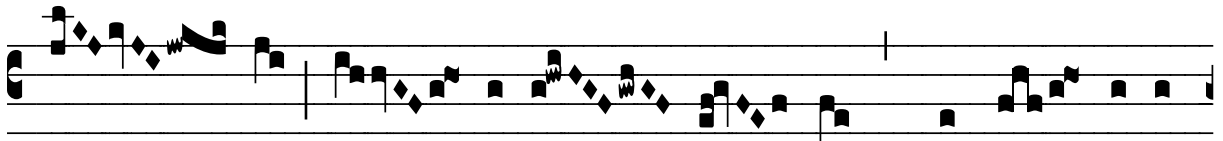
Lc 2, 10-11 ℞ Id., 12

℞. VII

**A**



N-ge- lus ad pa-stó- res a- it : Annúnti- o



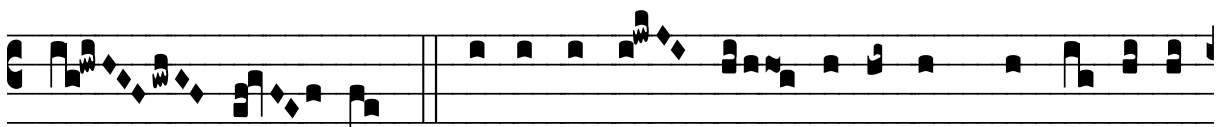
vo- bis gáu- di- um ma- gnum, quod e- rit om-



ni pópu- lo : qui- a na-tus est vo-bis Salvá- tor, \* Qui



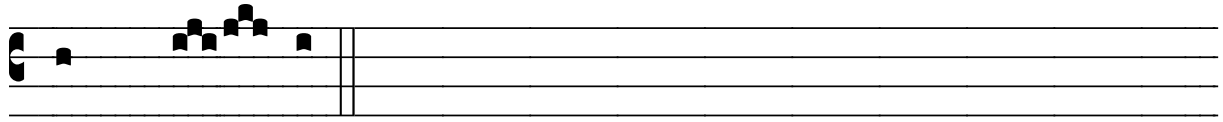
est Chri- stus Dó-mi- nus in ci- vi- tá-



te Da- vid. ℞ Inve-ni- é- tis infántem pannis invo-



lú- tum, et pó- si- tum in præ- sé- pi- o. \* Qui



est Chri- stus.