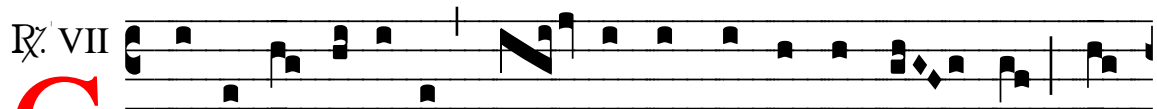


# ℞. Genti peccatrici

H 418					
Mode	7138	Rom1	0		
CAO	6768	Rom2	136r		
	G	B		M	V
H	R	D	F	S	L

Is 1, 4 √ Ex 32, 12



**G** Enti peccatrí-ci, pó- pu- lo ple-no peccá- to, mi-



se-ré- re, \* Dómi-ne, De- us. √ Esto placá- bi- lis su-



per nequí-ti- a pó-pu- li tu- i. \* Dómi-ne De- us.