

R̄. Miserere Domine populo tuo

H 412				
Mode	2090	Rom1	160r	
CAO	7159	Rom2	127r	
C				
H	R			L

Est 13, 15-17

R̄. II

M I- se-ré-re Dó- mi-ne, pó- pu- lo tu- o,

qui- a vo- lunt nos in-i-mí- ci pér- de- re,

et he-re-di-tá-tem tu- am de- lé-re de ter- ra. Ne despí- ci- as

partem tu- am quam redemísti ex Æ-gý- pto, * Sed

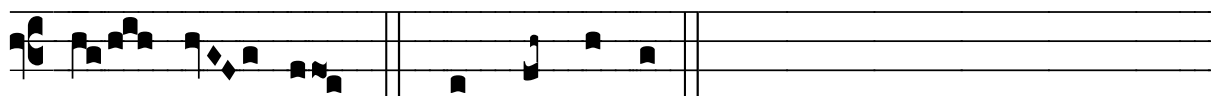
convér-te luctum nostrum in gáu-di- um, ut vi-vén-



tes laudé- mus te, Dómi- ne. ̄. Da no- bis, Dómi-



ne, locum pæni- ténti- æ, et ne claudas o-ra canénti- um te,



Dó- mi- ne. * Sed convér-te.