

℞. Spem in alio numquam habui

H 412					
Mode	2089	Rom1	160r		
CAO	7684	Rom2	127v		
C	G	B	E	M	V
H	R	D	F		L

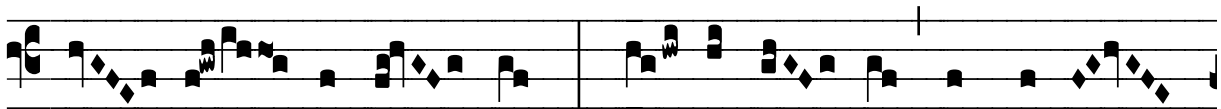
Est 14, 3

℞. II

S



Pem in á- li- o numquam há- bu- i, præ-ter in te,



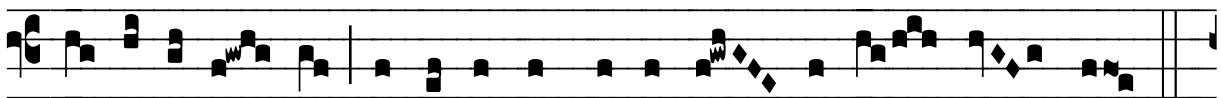
De- us Is-ra- el, * Qui i- rascé- ris et pro-pí-



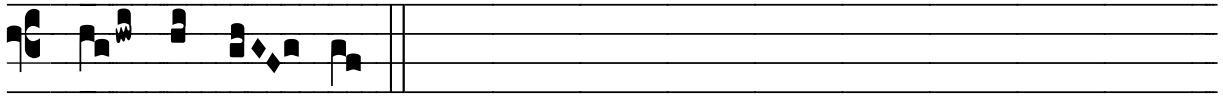
ti- us e- ris, et ómni- a peccá- ta hó- mi-num



in tri- bu- la- ti- ó- ne di- mít- tis. √. Dó- mi-ne, De- us



cæ- li et ter- ræ, réspi-ce ad humi- li- tá-tem no- stram.



* Qui i- rascé- ris.