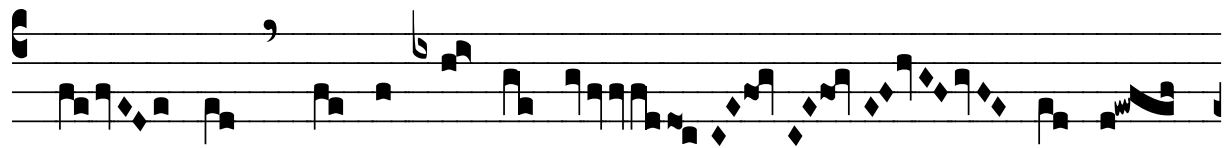


# R̃. Peto Domine

H 407					
Mode	1100	Rom1	157v		
CAO	7381	Rom2	124v		
C	G	B	E	M	V
H	R	D	F	S	L

Tob 3, 15.3; Sir 51, 12 Ṽ. Ps 79, 2

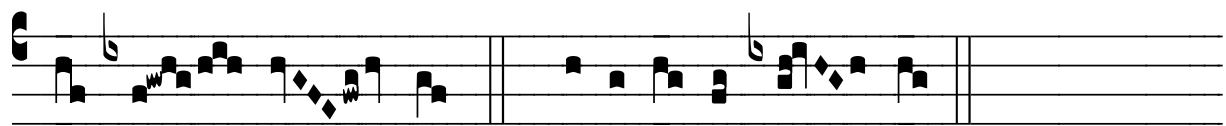
R̃. I  
**P** E- to, Dó- mi- ne, ut de víncu- lo im- pro-  
pé- ri- i hu- jus ab- sólvas me, aut cer- te dé- super ter-  
ram e- rí- pi- as me ; \* Ne remi- ni- scá- ris de-  
líc- ta me- a vel pa- réntum me- ó- rum, neque vindíc-  
tam su- mas de peccá- tis me- is, qui- a é-



ru- is sus-ti- nén-tes te, Dó-mi-



ne.  $\forall$ . Qui regis Isra- el, in -tén- de, qui de- dú-cis vel- ut



o- vem Jo- seph. \* Ne remi- ni-scá- ris.