

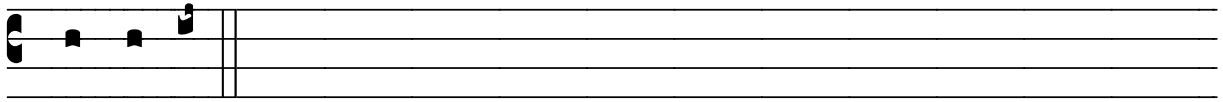
# ℞. Verbum iniquum et dolosum

H 400					
Mode	1095	Rom1	143r		
CAO	7841	Rom2	112r		
C		B	E	M	V
H	R	D	F	S	L

Pr 30, 8 √ Id., 9

℞. I

**V** Er- bum in-í- quum et do- ló- sum lon- ge fac  
a me, Dómi- ne ; di-ví- ti- as et pauper- tá- tes ne  
dé- de- ris mi- hi, \* Sed tantum víctu- i me- o  
trí- bu- e ne-ces- sá- ri- a. √. Ne forte sa- ti- á- tus é-  
vo-nam il- lud, et per- jú-rem nomen De- i me- i



\* Sed tantum.