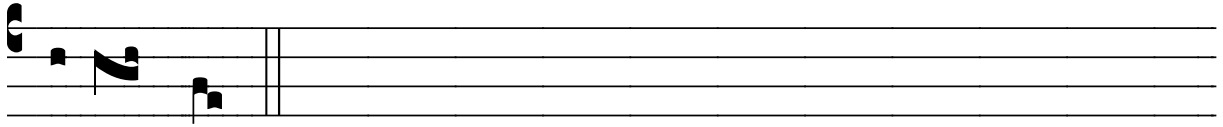


# ℞. Emitte Domine sapientiam

H 398					
Mode	1093	Rom1	141v		
CAO	6657	Rom2	111r		
C		B	E	M	V
H	R	D	F	S	L

Sap 9, 10 Ƿ Id., 4

℞. I  
**E** Mít-te, Dó- mi- ne, sa- pi- én- ti- am de se-  
de magni- tú-di-nis tu- æ, ut me-cum sit et me-  
cum lab- ó- ret, \* Ut sci- am quid accép- tum sit co-  
ram te omni témpo- re. Ƿ. Da mi-hi, Dómi-ne, sé-di-  
um tu- á-rum assi-strí- cem sa- pi- én- ti- am. \* Ut



sci- am quid.