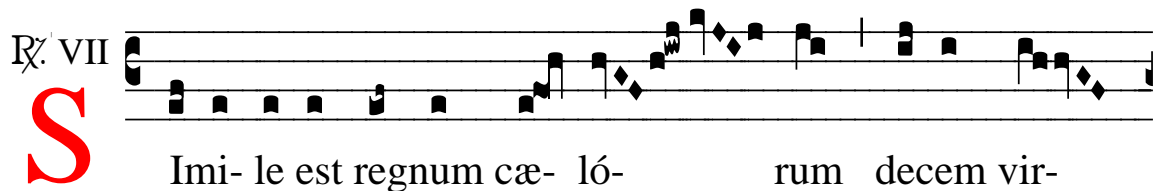


# ℞. Simile est regnum

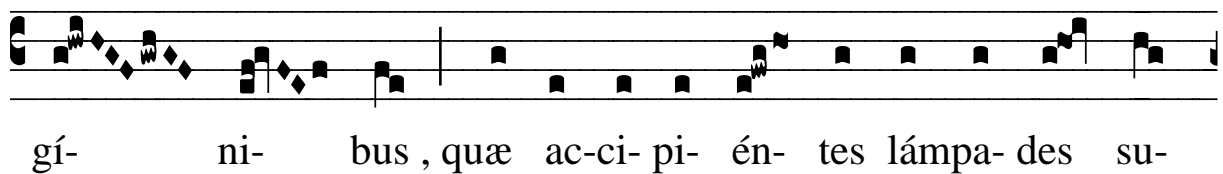
H 386					
Mode	7128	Rom1	0		
CAO	7667	Rom2	0		
			E		
H	R*	D	F		L

Mt 25, 1 ♪ Id., 4

℞. VII  
**S** Imi- le est regnum cæ- ló- rum decem vir-



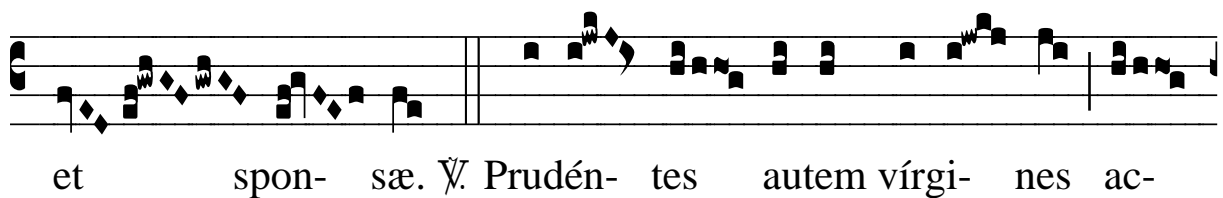
gí- ni- bus , quæ ac-ci- pi- én- tes lámpa- des su-



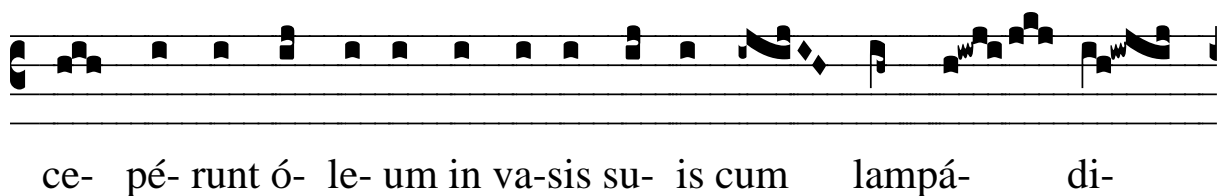
as \* Ex-i- é- runt ób-vi- am spon- so

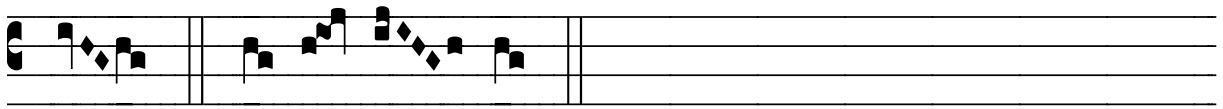


et spon- sæ. ♪ Prudén- tes autem vírgi- nes ac-



ce- pé- runt ó- le- um in va-sis su- is cum lámpá- di-





bus. \* Ex-i- é- runt.