

R̄. Dominus qui elegit te

H 379

| | | | |
|------|------|------|---|
| Mode | 2073 | Rom1 | 0 |
| CAO | 6523 | Rom2 | 0 |
| C | | E | |
| H | R | | |

R̄. II
D



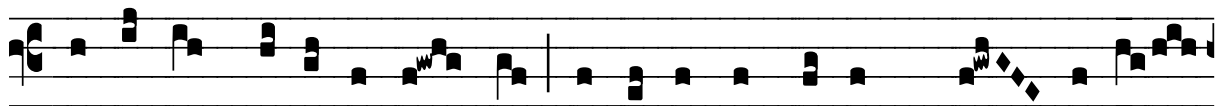
O-mi-nus qui e- lé-git te, ipse te co- ro-



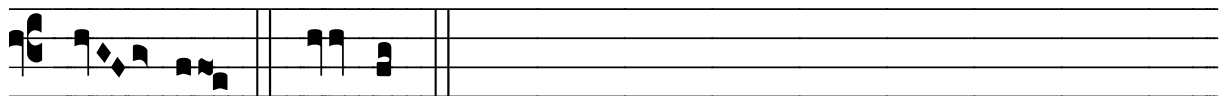
ná- vit co-ró- na ju- stí- ti- æ; * Vi- a e-



nim Dómi-ni rec- ta facta est co-ram te. V̄. Vi- a



justó-rum recta facta est, et i- ter sanctó-rum præ- pa-rá-



tum est. * Vi- a.