

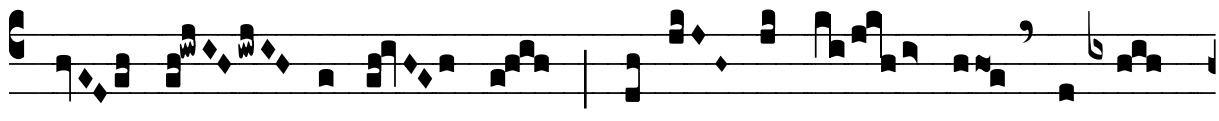
R̃. Iste est qui ante Deum

H 378

Mode	8129	Rom1	177r		
CAO	7003	Rom2	147v		
C		E	M	V	
H	R	D	F	S	L



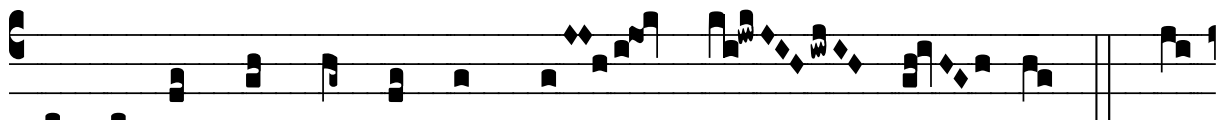
I Ste est qui ante De- um magnas vir-tú- tes



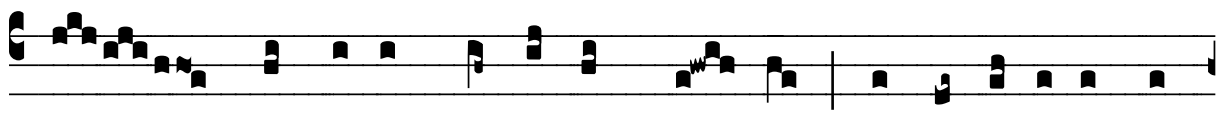
o- pe- rá-tus est, et om- nis ter- ra doctrí-



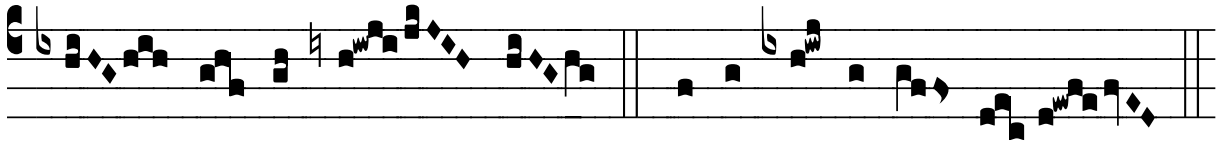
na e-jus re- plé- ta est ; * Ipse in-tercé- dat



pro peccá- tis ómni- um po- pu- ló- rum. ̃. I-



ste est qui contémpsit vi- tam mun- di, et pervé- nit ad cæ-



lé- sti- a re- gna. * Ipse in-tercé- dat.