



# ℞. Iste sanctus pro lege

|       |      |      |      |   |   |
|-------|------|------|------|---|---|
| H 372 |      |      |      |   |   |
| Mode  | 5042 | Rom1 | 179v |   |   |
| CAO   | 7010 | Rom2 | 146v |   |   |
| C     |      |      | E    | M | V |
| H     | R    | D    | F    | S | L |

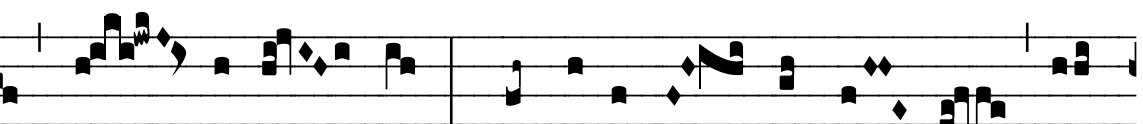
℞. V



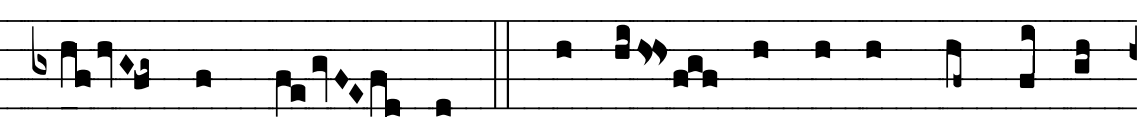
**I** Ste sanc- tus pro le-ge De- i su- i cer- tá-




vit usque ad mor- tem, et a ver-bis impi- ó-



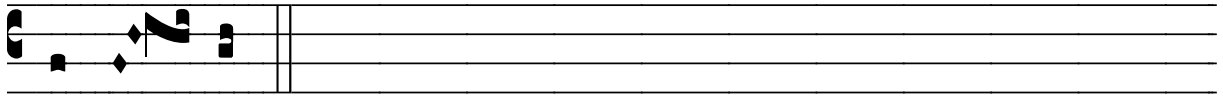
rum non tímu- it: \* Fundá-tus e- nim e- rat su-



pra fir- mam pe- tram. ℞. Iste est qui contépsit vi- tam



mun- di, et pervé-nit ad cæ-lé- sti- a re- gna. \* Fundá-



tus e- nim.