

℞. In circuitu tuo Domine

H 368					
Mode	5041	Rom1	0		
CAO	6891	Rom2	0		
C			E	M	V
H	R	D	F	S	L

℣. Ps 47, 2

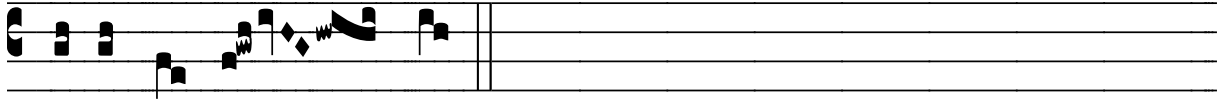
℞. V
I N circú- i- tu tu- o, Dó- mi- ne, lumen est quod

num-quam de- fí-ci- et ; i-bi con-sti- tu- í- sti lu-ci-

díssimas mansi- ó- nes, * I- bi requi- é- scunt sanctó-

rum á- ni- mæ. ℣. Magnus Dómi-nus et laudá-bi- lis ni-

mis, in ci-vi-tá-te De- i nostri, in monte sancto e- jus. * I-



bi requi- é- scunt.