

℞. Propter testamentum Domini

H 368					
Mode	1080	Rom1	0		
CAO	7440	Rom2	0		
C			E	M	V
H	R	D	F	S	L

℣. Ps 132, 1

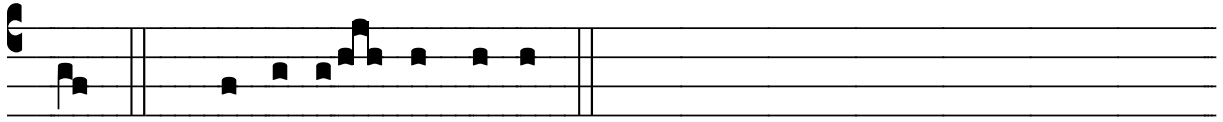
℞. I
P Rop- ter te- sta- mén- tum Dó- mi- ni et le- ges

pa- tér- nas asti- té- runt sancti De- i in amó- re fra- ter-

ni- tá- tis, * Qui- a u- nus fu- it semper spí- ri- tus in e-

is et u- na fi- des. ℣. Ecce quam bo- num

et quam ju- cún- dum ha- bi- tá- re fra- tres in u-



num. * Qui- a u- nus fu- it