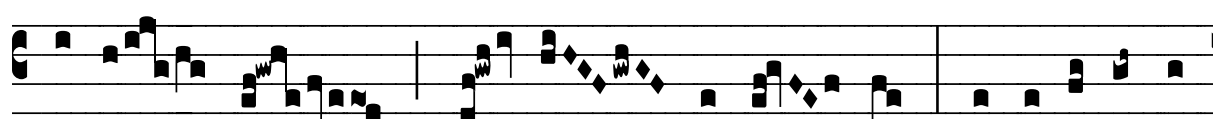


# ℞. Ecce ego mitto vos

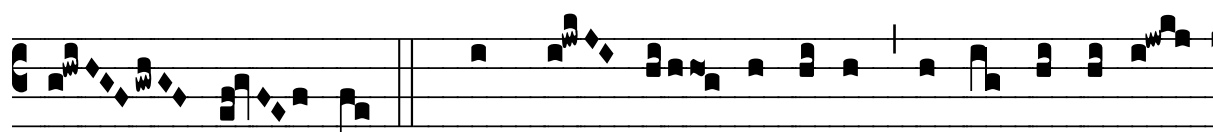
H 360					
Mode	7113	Rom1	175r		
CAO	6588	Rom2	143v		
C			E	M	V
H	R	D	F	S	L

Mt 10, 10 ℣ Jo 12, 36

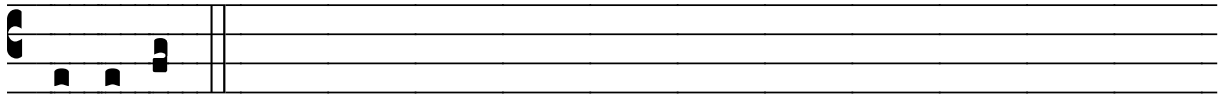
℞. VII   
**E** Cce ego mit-to vos sic-ut o- ves in mé- di- o

  
 lupó- rum, di- cit Dómi- nus, \* Estó-te ergo

  
 prudéntes sic-ut ser- pén- tes, et sím- pli- ces sic- ut

  
 co- lúm- bæ. ℣. Dum lu- cem ha- bé- tis cré- di- te in lu-

  
 cem, ut fí- li- i lu- cis si- tis, di- cit Dó- mi- nus.



\* Estó-te.