

℞. Dedisti Domine habitaculo

H 353					
Mode	6021	Rom1	172r		
CAO	6402	Rom2	141r		
C		B	E	M	V
H	R	D	F	S	L

℣. Ps 125, 6

℞. VI

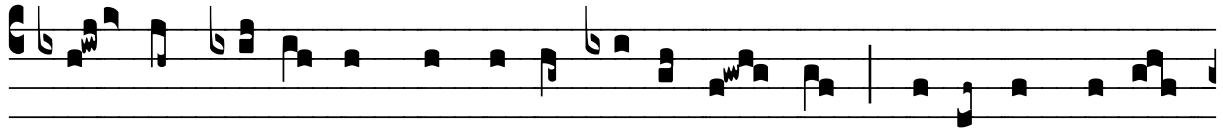
D E-dí- sti, Dómi-ne, ha- bi- tá-cu-lum martý-

ri tu-o Cle-mén- ti in ma- ri in mo- dum tem-

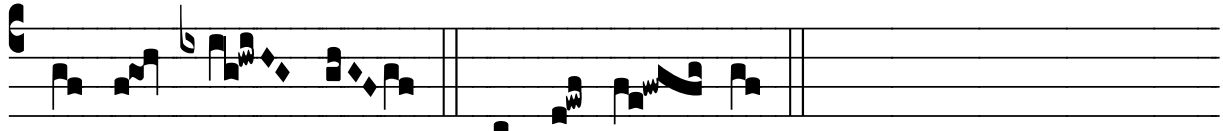
pli marmó- re- i, angé- li- cis má- ni- bus præ-pa-

rá- tum i- ter præbens pó- pu- lo ter- ræ, * Ut e-

nár- rent mi- ra- bí- li- a tu- a. ℣. Ve-ni- én- tes



au- tem vé-ni- ent cum exsul- ta-ti- ó- ne, portántes maní-



pu- los su- os. * Ut e- nár- rent.