

R̄. Domine Jesu Christe pastor

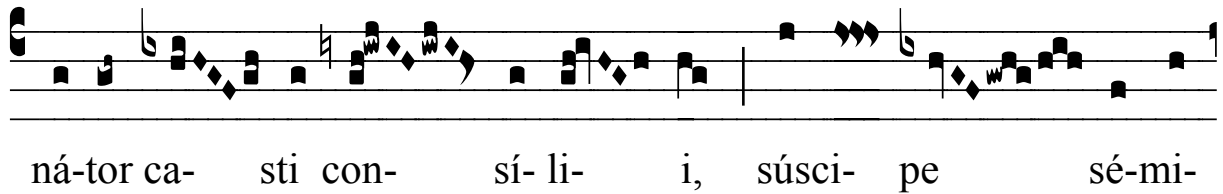
H 351

Mode	8119	Rom1	170v		
CAO	6498	Rom2	139r		
C	G	B	E	M	V
H	R	D	F	S	L

R̄. VIII
D O-mi-ne Je-su Christe, pastor bo- ne, semi-



ná-tor ca- sti con- sí- li- i, súsci- pe sé-mi-



num fruc- tus quos in Cæ- cí- li- a se- mi- ná- sti. * Cæcí-



li- a, fámu- la tu- a, qua- si o- vis ti- bi argumen-

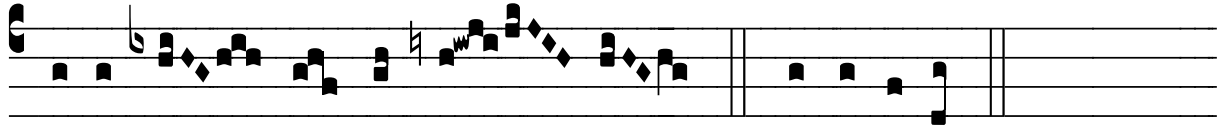


tó- sa de- sér- vit. Ț. Nam sponsum, quem qua-si





le- ónem fe- ró- cem accé- pit, ad te qua-si agnum mansu- e-



tíssi-mum de- sti- ná- vit. * Cæ-cí- li- a.