

℞. Martinus Abrahae sinu

H 338					
Mode	1077	Rom1	168v		
CAO	7132	Rom2	137v		
C		B	E	M	V
H	R	D	F	S	L

℞. I

M Artí-nus A-bra- hæ si- nu læ-tus

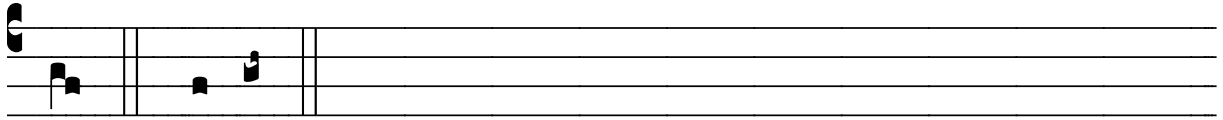
ex- cí- pi- tur ; Martí- nus, hic pau-per et mó- di-

cus * Cæ-lum di-ves ingré- di- tur, hymnis cæ-lé-sti- bus

hono- rá- tur. √. Martí-nus e-píscopus migrá- vit

a sǣ-cu- lo ; vi- vit in Christo gemma sa- cer- dó-

The image shows a musical score for the Latin text 'Martinus Abrahae sinu'. It consists of five staves of music, each with a corresponding line of Latin text below it. The first staff begins with a large red 'M' and the text 'Artí-nus A-bra- hæ si- nu læ-tus'. The second staff continues with 'ex- cí- pi- tur ; Martí- nus, hic pau-per et mó- di-'. The third staff has 'cus * Cæ-lum di-ves ingré- di- tur, hymnis cæ-lé-sti- bus'. The fourth staff reads 'hono- rá- tur. √. Martí-nus e-píscopus migrá- vit'. The fifth and final staff concludes with 'a sǣ-cu- lo ; vi- vit in Christo gemma sa- cer- dó-'. The musical notation includes various note values, rests, and bar lines, typical of a medieval or early modern manuscript.



tum. * Cæ-lum.