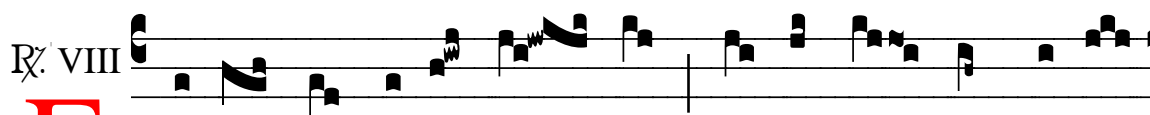
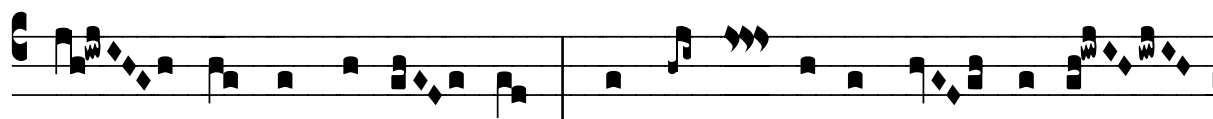


℞. Electus Dei Gallus

H 323					
Mode	8110	Rom1	0		
CAO	6645	Rom2	0		
H	R				



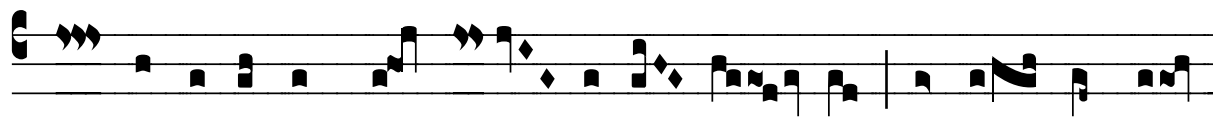
E Léc- tus De- i Gal- lus pá- ri- ter cum di- á-



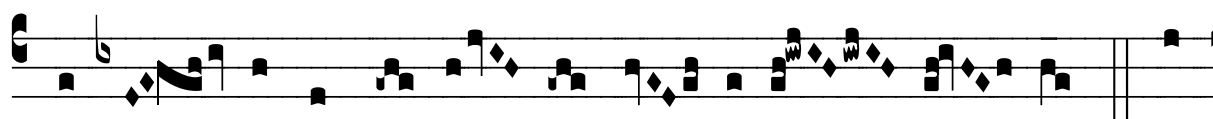
co- no prostrá- vit se, et hu- júsmo- di pre- ces e-



mí- sit : De- us omní- pot- ens, jube hos



dæ- mo- nes i- stum lo- cum de- sé- re- re, * Ut sit sancti-



fi- cá- tus in ho- nó- rem nó- mi- nis tu- i. ℞. Præ-



pa- ra in hoc loco ha- bi- ta-ti- ó- nem tu- is ser- ví-



ti- is ap- tam. * Ut sit.