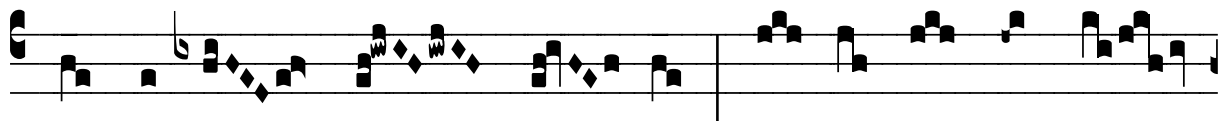


℞. Hic est Michael archangelus

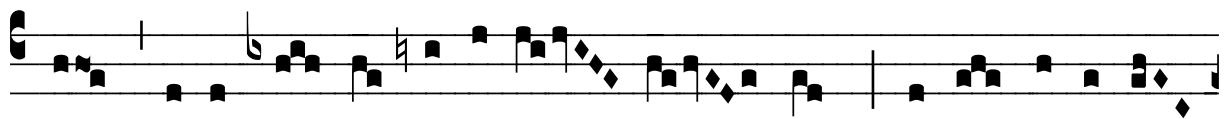
H 315					
Mode	8105	Rom1	0		
CAO	6826	Rom2	0		
C		B	E	M	V
H	R	D			L



H Ic est Mícha- el archánge- lus, princeps mi- lí-



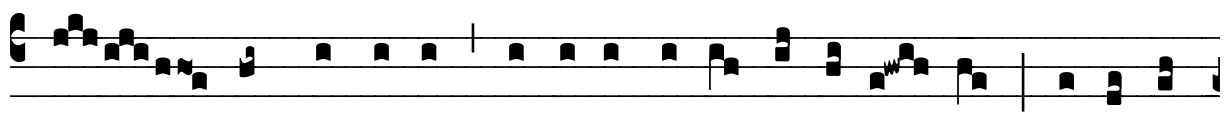
ti- æ an- ge- ló- rum, cu- jus ho- nor præ-



stat bene- fí- ci- a popu- ló- rum, * Et o- rá- ti- o



perdú- cit ad re- gna cæ- ló- rum. ̅. Ange-



li archánge- li, thro-ni et domi- na- ti- ó- nes, princi-pá-



tus et pot-está-tes, vir-tú- tes cæ- ló- rum. * Et.