

# ℞. Felix namque es

H 307					
Mode	1069	Rom1	0		
CAO	6725	Rom2	0		
		B	E	M	V
H	R		F	S	L

℞. I

**F** E-lix namque es, sacra vir-go Ma-rí-a,

et omni lau-de dignís-si-ma; \* Qui-a

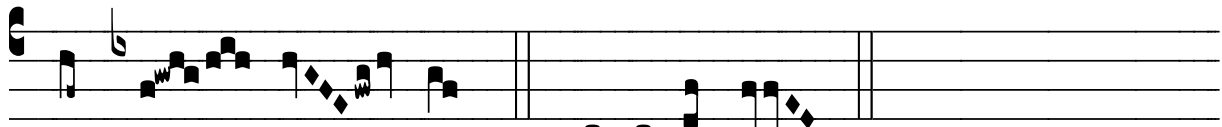
ex te ortus est sol justí-ti-æ, Chri-stus

De-us no-ster. √ O-ra pro pópu-lo, intervé-ni pro

cle-ro, inter-cé-de pro de-vó-to femí-ne-o se-xu, sén-



ti- ant om- nes tu- um le- vá- men qui- cúmque cé-lebrant tu-



um na- tá- lem. \* Qui- a ex te.