

℞. Strinxerunt corporis membra

H 292					
Mode	2059	Rom1	147r		
CAO	7711	Rom2	116r		
C		B	E	M	V
H	R	D	F	S	L

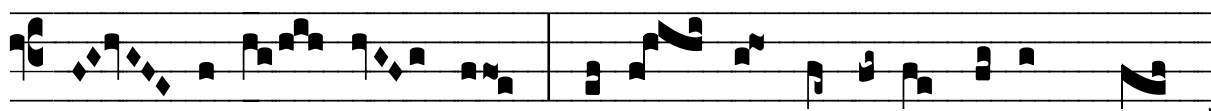
℞. II
S



Trinxé- runt córpo-ris mem- bra pó-si- ta in



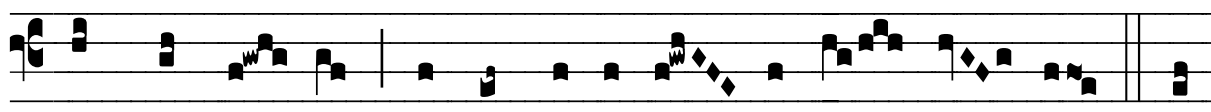
cra- tí-cu- la ; subji-ci- énti- bus pru- nas insúltat



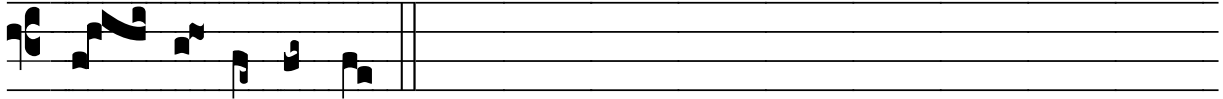
le- ví-ta Chri- sti. * Be- á- te Lauréti, martyr Chri-



sti, intercé- de pro no- bis. Ÿ. Me- a nox obscú-



rum non ha- bet, sed omnis in lu- ce cla- ré- scit. * Be-



á- te Laurén-ti.