

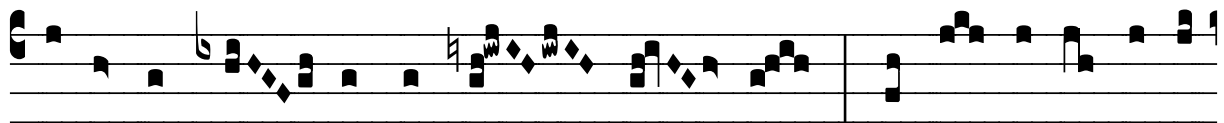
# R̄. Non me derelinque pater

H 291					
Mode	8097	Rom1	145r		
CAO	7229	Rom2	114r		
C		B	E	M	V
H	R	D	F	S	L

R̄. VIII



**N** On me de-re- línque, pa- ter sancte, qui- a



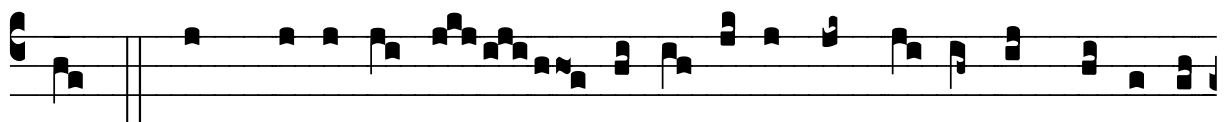
the-sáuros tu- os jam ex- pén- di . \* Non e- go te dé-se-



ro, fi- li, ne- que de-re- lín-quo, sed ma- jó-ra



ti-bi debén- tur pro fi- de Chri- sti cer- támi-



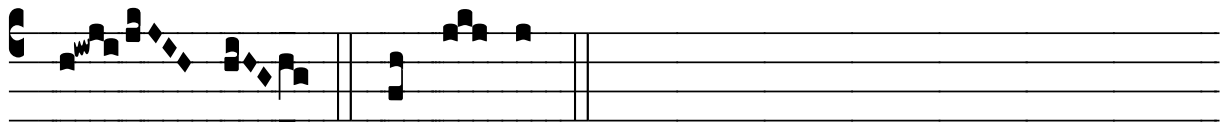
na. †. Nos qua-si se-nes le-vi- ó-ris pugnae cursum re-cí-pi-



mus, te qua-si júve-nem glo-ri- ó-si- or de ty-ránno tri- úmplus



expéc- tat, post trí- du- um sequé- ris sacer dó- tem et le-



ví- tam. \* Non e- go.