

℞. Tu es Petrus et super

| | | | | | |
|-------|------|------|------|---|---|
| H 280 | | | | | |
| Mode | 7093 | Rom1 | 132v | | |
| CAO | 7788 | Rom2 | 104v | | |
| C | | B | E | M | V |
| H | R | D | F | S | L |

Mt 16, 18 √ Id., 19

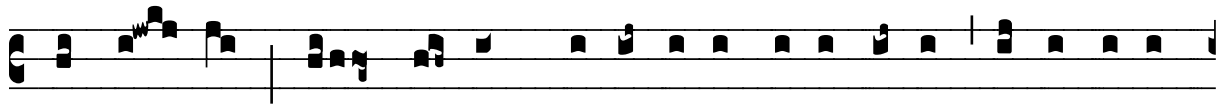
℞. VII **T** U es Pe- trus, et su- per hanc petram

æ- di- fi- cá- bo Ecclé- si- am me- am, et por- tæ ín-

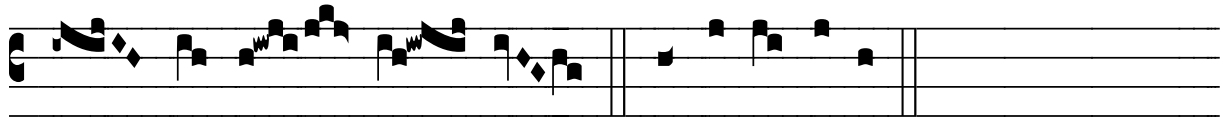
fe- ri non præva- lé- bunt ad- vérsus e- am, * Et

ti- bi da- bo cla- ves re- gni cæ- ló- rum.

√. Quodcúmque li- gá-ve- ris super terram e- rit li- gá- tum et



in cæ- lis, et quodcúmque sólve-ris super terram e- rit so-lú-



tum et in cæ- lis. * Et ti-bi dabo.