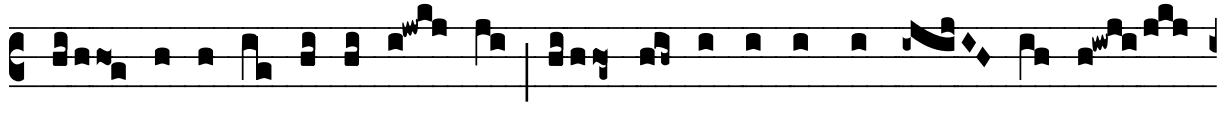


℞. Hic praecursor directus

H 276					
Mode	7090	Rom1	129r		
CAO	6837	Rom2	100r		
C		B	E	M	V
H	R	D	F	S	L

Jo 5, 35 ℥ Lc 1, 17

℞. VII
H ic praecur- sor di-rectus, et lu-cerna
lu- cens ante Dó-mi- num ; * Ipse est e- nim Jo-
án- nes, qui vi- am Dó- mi- no praepa-rá- vit
in é-re- mo, sed et Agnum De- i demon- strá-
bat, et il- lumi-ná- bat mentes hómi- num. ℥ I-



pse præ-í-bit ante il- lum in spí- ri- tu et vir-tú- te E-



lí- æ. * Ipse est e- nim