

℞. Plateae tuae Jerusalem

H 248					
Mode	1051	Rom1	0		
CAO	7390	Rom2	0		
C	G	B	E		V
H	R	D	F	S	L

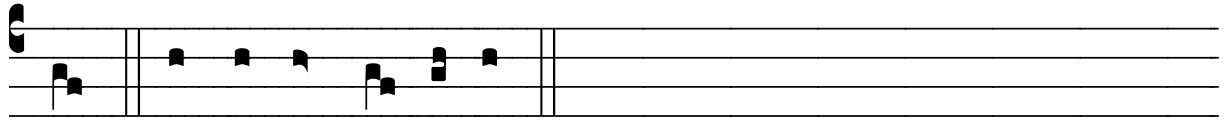
Tob 13, 22 √ Ps 147, 2

℞. I

P La-teæ tu- æ, Je- rú- sa- lem sternéntur au-
 ro mun- do, al- le- lú- ia, et cantá- bi- tur in
 te cánti- cum læ- tí- ti- æ : al- le- lú- ia ; * Et per om-
 nes vicos tu- os ab u- ni- vér- sis di- cé- tur : al- le- lú-
 ia al- le- lú- ia. √ Quóni- am confortá- vit seras



portá- rum tu- á- rum, be-ne- dí-xit fí- li- is tu- is in



te. * Et per omnes vi-cos.