

R̄. Revelabunt caeli iniquitatem

| | | | | | |
|-------|------|------|---|---|---|
| H 182 | | | | | |
| Mode | 1047 | Rom1 | 0 | | |
| CAO | 7543 | Rom2 | 0 | | |
| C | G | B | E | M | V |
| H | R | D | F | S | L |

Job 20, 27 Ṽ. Ps 68, 23

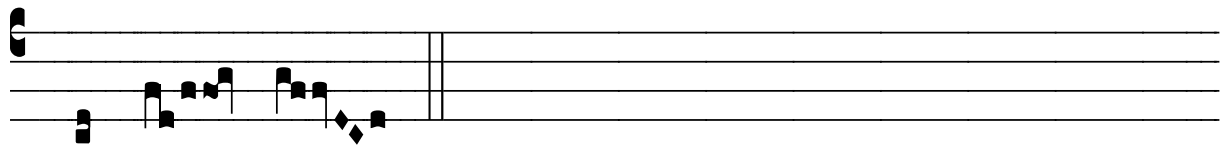
R̄. I
R E-ve-lábunt cæ- li in-iqui- tá- tem Ju- dæ,
et ter-ra advérsus e- um con- súr- get, et ma- ni- fé- stum
e- rit peccá- tum il- lí- us in di- e furó- ris Dó- mi- ni,
* Cum e- is qui di- xé- runt Dómi- no De- o : Re- cé- de
a no- bis, sci- én- ti- am vi- á- rum tu- á- rum



nó- lu- mus. V̇. Fi- at mensa e- ó-rum co-ram i-ipsis in lá-



que- um, et in re-tribu- ti- ónes et in scán- da- lum.



* Cum e- is