


# ℞. In monte Oliveti

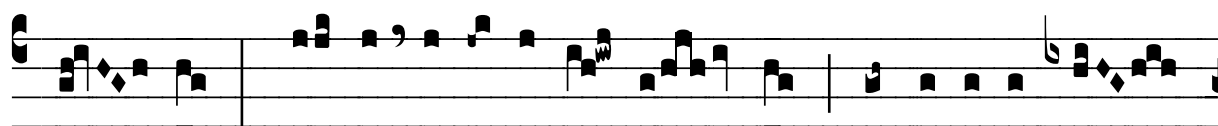
H 178					
Mode	8073	Rom1	95r		
CAO	6916	Rom2	64v		
C	G	B	E	M	V
H	R	D	F	S	L

Mt 26, 39 ℥. Id.

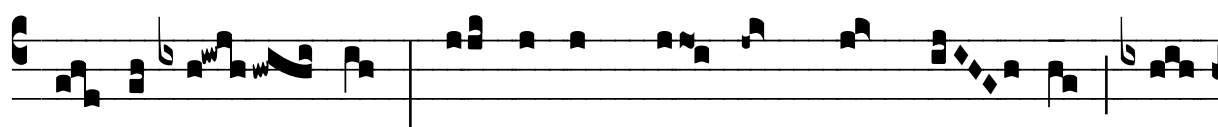
℞. VIII



**I** N mon- te O-li- vé- ti o-rá- vi ad



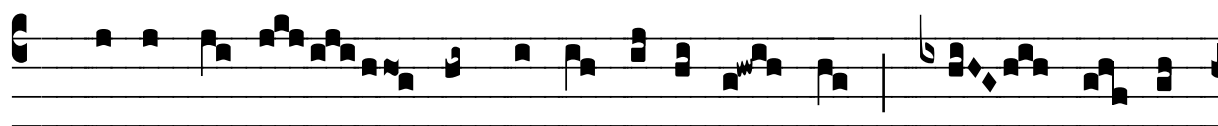
Pa- trem : Pa- ter, si fí- e- ri pot- est, tránse- at a me



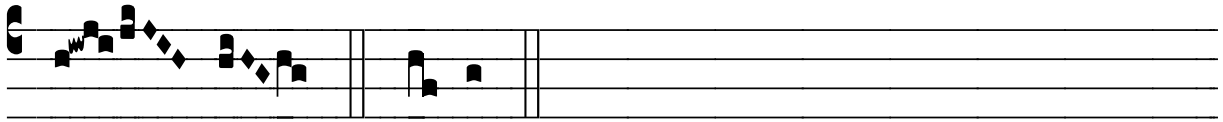
ca- lix i- ste ; spí- ri- tus qui- dem promptus est, ca-



ro autem in- fír- ma. \* Fi- at vo- lún- tas tu- a.



℥. Ve-rúm tamen non sic-ut ego vo- lo, sed sic- ut



tu vis. \* Fi- at.