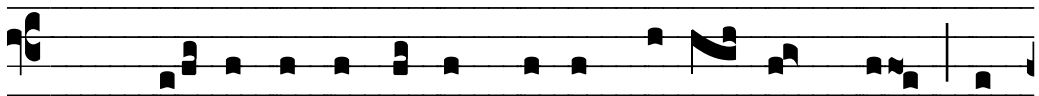


# ℞. Synagoga populorum


H 172					
Mode	2040	Rom1	92v		
CAO	7747	Rom2	62v		
C	G	B	E		V
H	R	D	F		

Ps 7, 8.10 ℞. Ps 3, 4

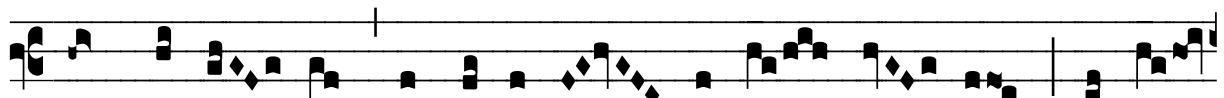
℞. II  
**S** Yna-gó- ga po-pu- ló-rum circumdedé- runt me, et




non réddi-di retri-bu-énti-bus mi-hi ma- la ; \* Con-sumé-




tur, Dómi- ne, nequí- ti- a pecca- tó- rum et dí-

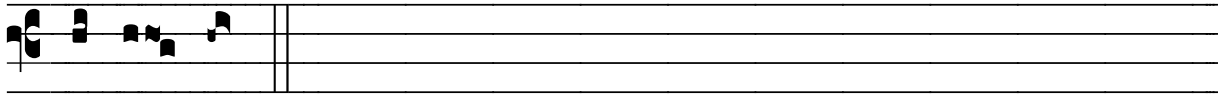


ri- ges ju- stum. ℞. Tu au- tem, Dómi-ne, suscéptor me-



us es, gló-ri- a me- a et ex-áltans caput me- um. \* Con-





sumé- tur.