

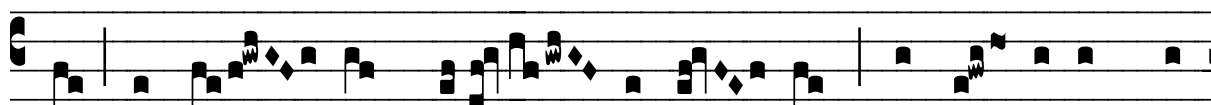
R̄. In proximo est

H 166					
Mode	7061	Rom1	0		
CAO	6931	Rom2	0		
C	G	B	E	M	V
H	R	D	F	S	L

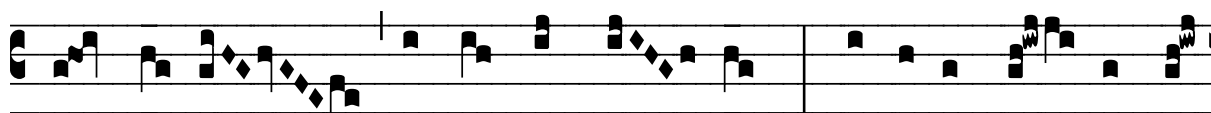
Ps 21, 11.17.21 Ȳ Id., 2



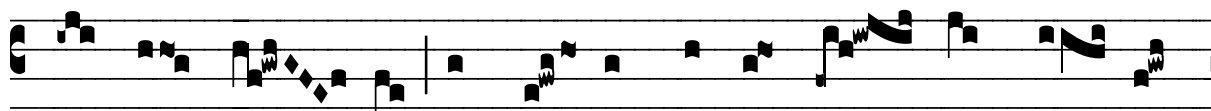
I N próxi-mo est tri-bu-lá-ti- o me- a, Dó- mi-



ne, et non est qui ádju- vet ; ut fó- di- ant ma-



nus me- as et pe- des me- os : * Lí-be-ra me de o-



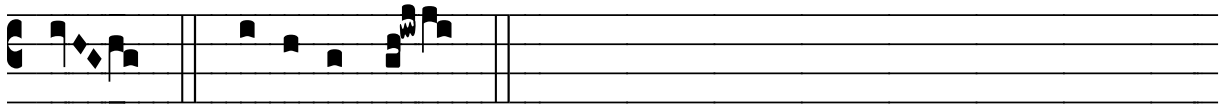
re le- ó- nis, ut nar- rem nomen tu- um frá- tri-



bus me- is. Ȳ De us, De- us me-us, ré-spi-ce in me,



qua- re me de-re- liquísti, longe a sa- lú- te me-



a. * Líbe-ra me.