


# ℞. Adjutor et susceptor meus

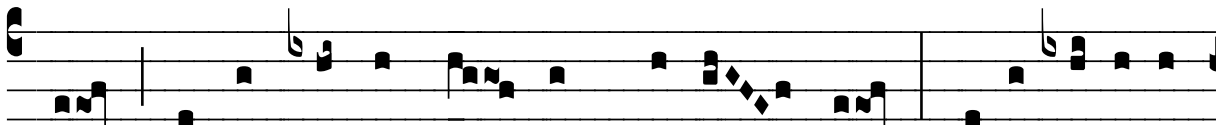
H 165					
Mode	4037	Rom1	0		
CAO	6036	Rom2	0		
C	G	B	E	M	V
H	R	D	F	S	L

Ps 118, 114 √ Ps 58, 2

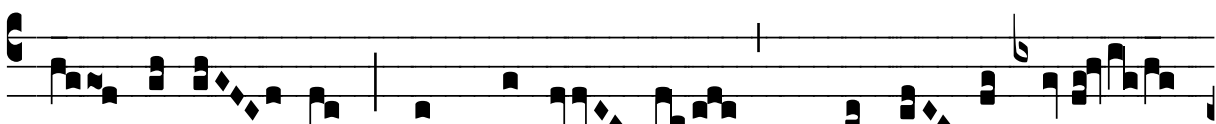
℞. IV




**A** Djú- tor et suscé- ptor me- us tu es, Dómi-



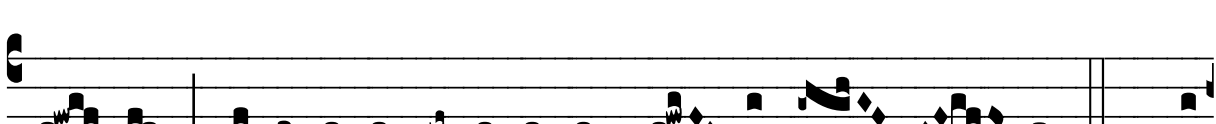
ne, et in verbum tu- um spe-rá- vi. \* Decli- ná-te a



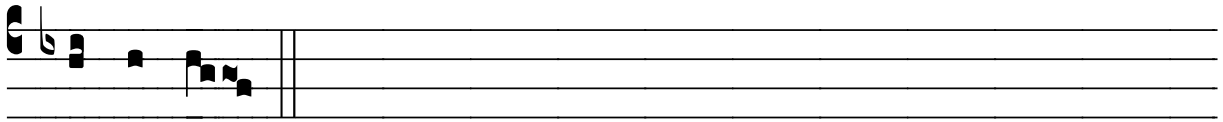
me ma-lí- gni, et scru-tá- bor mandá- ta De- i



me- i. √ E-ri-pe me de in- i-mí-cis me- is, De- us



me- us, et ab insurgénti-bus in me lí-be- ra me. \* Decli-



náte a me.