

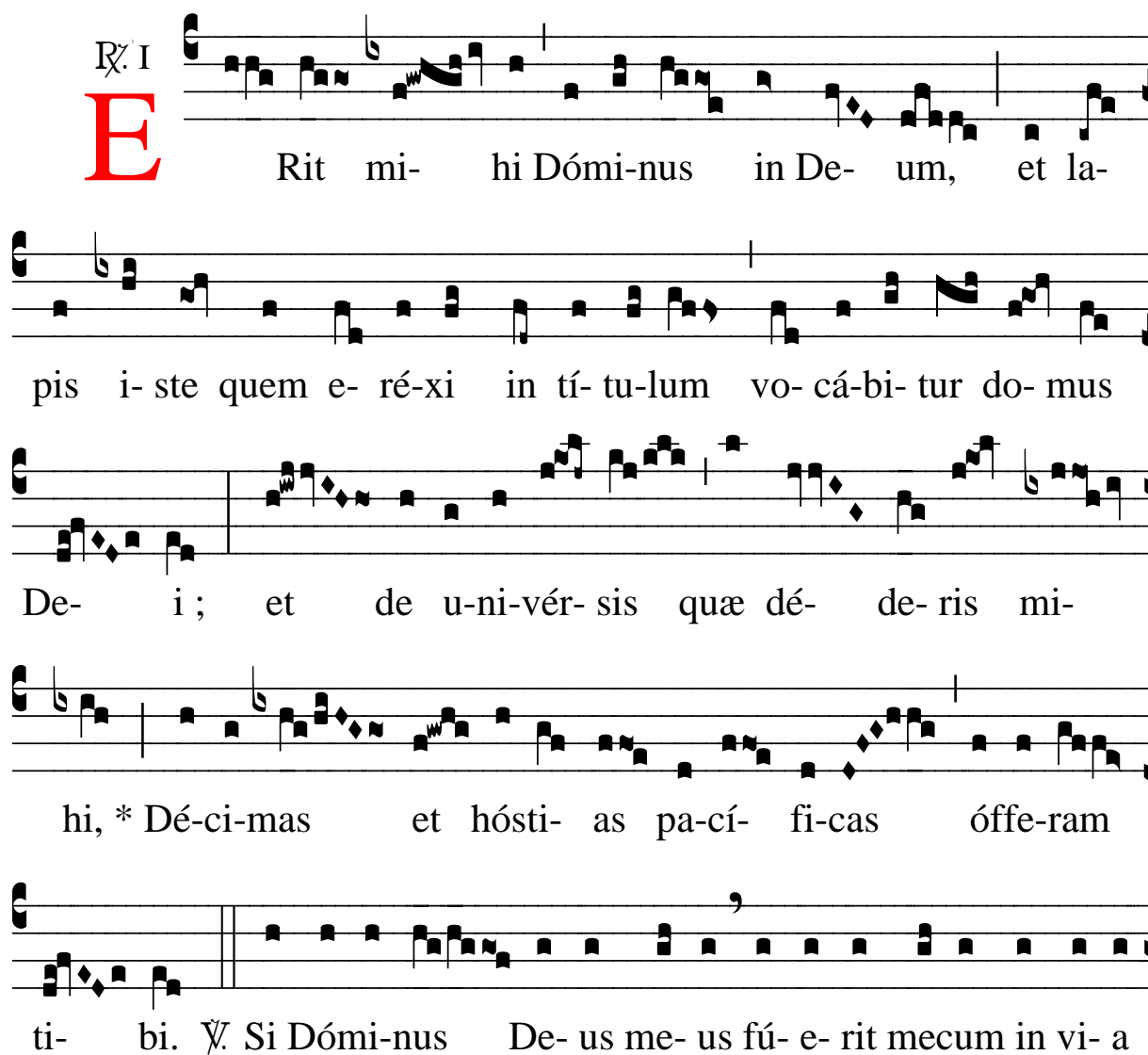
℞. Erit mihi Dominus in Deum

H 150					
Mode	1041	Rom1		75v	
CAO	6668	Rom2		0	
C	G	B	E	M	V
H	R	D	F	S	L

Gn 28, 21-22 √ Id., 20

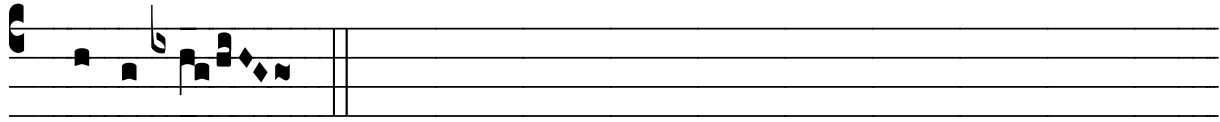
℞. I

E Rit mi- hi Dómi-nus in De- um, et la-
pis i- ste quem e- ré-xi in tí- tu-lum vo- cá-bi- tur do- mus
De- i; et de u-ni-vér- sis quæ dé- de- ris mi-
hi, * Dé-ci-mas et hósti- as pa-cí- fi-cas óffe-ram
ti- bi. √ Si Dómi-nus De- us me- us fú- e- rit mecum in vi- a

The image shows a musical score for the Latin text. It consists of five systems of music. Each system has a vocal line (treble clef) and a basso continuo line (bass clef). The text is written below the vocal line. The first system starts with a large red 'E' and the text 'Rit mi- hi Dómi-nus in De- um, et la-'. The second system continues with 'pis i- ste quem e- ré-xi in tí- tu-lum vo- cá-bi- tur do- mus'. The third system continues with 'De- i; et de u-ni-vér- sis quæ dé- de- ris mi-'. The fourth system continues with 'hi, * Dé-ci-mas et hósti- as pa-cí- fi-cas óffe-ram'. The fifth system continues with 'ti- bi. √ Si Dómi-nus De- us me- us fú- e- rit mecum in vi- a'. The music is in a simple, homophonic style with a clear rhythmic pattern.



i-sta qua e-go ámbu- lo et custo- dí- e- rit me.



* Dé-ci-mas.