

℞. Angelis suis mandavit


H 145					
Mode	1038	Rom1	0		
CAO	6087	Rom2	0		
C	G	B	E	M	V
H	R		F	S	L

Ps 90, 11-12 ℞ Id., 13


℞. I



A Nge-lis su- is mandá- vit de te, ut custó-



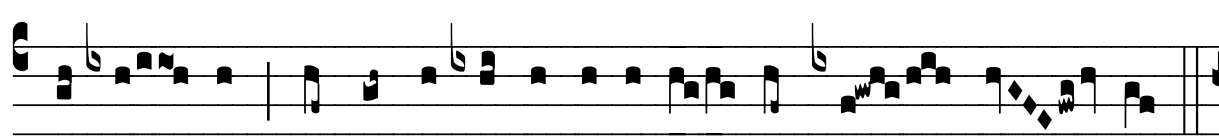
di- ant te in ómni- bus vi- is tu- is ; * In má-ni-bus



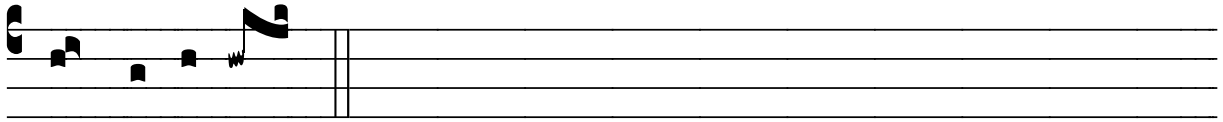
portá- bunt te, ne umquam offén- das ad lá-pi-dem



pe- dem tu- um. ℞. Super á-spi-dem et ba-si- líscum am-



bu- lá- bis, et conculcá-bis le- ónem et dra- có- nem.



* In má-ni-bus.