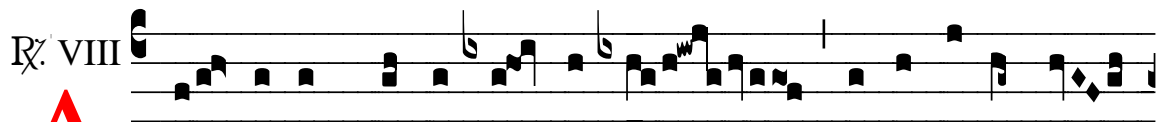
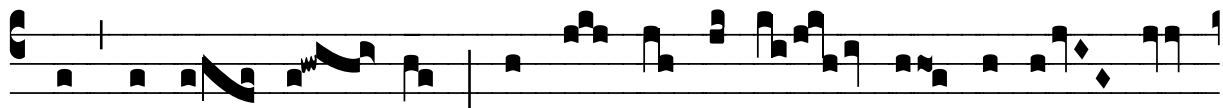


R̄. Angelus Domini bonus comitetur

		H 0			
Mode	9999	Rom1	0		
CAO	6091	Rom2	0		
C	G		E	M	V
		D	F	S	



A N- ge-lus Dómi- ni bonus comi- té-tur te-



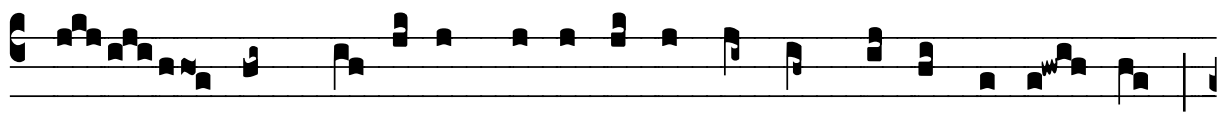
cum, al-le- lú- ia, et be- ne dispó- nat i- tí- ne-



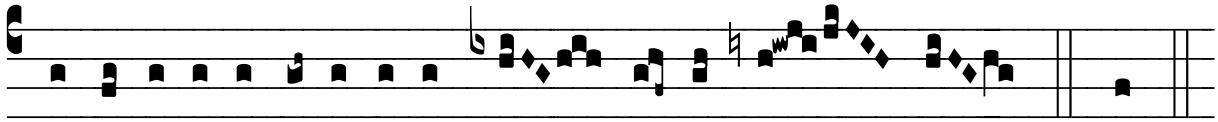
ri tu- o, * Ut í- te-rum cum gáu- di- o re-



ver-tá- ris ad nos, al- le-lú- ia, al- le- lú- ia. V̄. So-



la namque tenes princi-pá-tum in conspéctu Dómi- ni ,



proptér-e- a re-vérte-re in the- sáuros tu- os. * Ut.