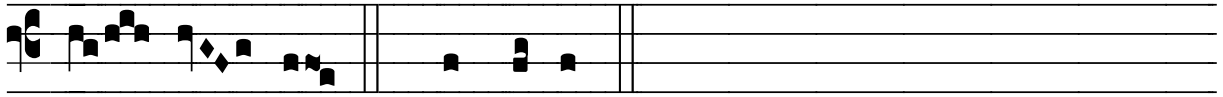


℞. Praedicta nutrix illius

		H 129			
Mode	2018	Rom1	0		
CAO	7424	Rom2	0		
H	R				

℞. II
P Ræ-díc- ta nutrix il- lí- us, ad purgán- dum trí-
 ti- cum, a vi- cí- nis mu- li- é- ri- bus ca-pi-sté-
 ri- um pé- ti- it ; * Quod ca-su acci-dén- te
 con- fráctum est. Ǟ. Nutrí- ci in auxí- li- um Grande fe- cit
 mi- rá-cu- lum : Primum in partes di-ví-sum Re-júnxit ca- pi-

The musical notation consists of five systems, each with a vocal line and a basso continuo line. The vocal line is written in a medieval-style square neume on a four-line staff. The basso continuo line is written in a similar style on a five-line staff. The text is written below the vocal line, with syllables aligned under the notes. The first system starts with a large red 'P' and a '℞. II' symbol. The text continues across the five systems, ending with 'mi- rá-cu- lum : Primum in partes di-ví-sum Re-júnxit ca- pi-'. There are some special characters like 'Ǟ' and '*' in the text.



sté- ri- um. * Quod ca-su.