

# R̃. Gaude Maria Virgo

H 118					
Mode	6009	Rom1	0		
CAO	6759	Rom2	0		
C	G	B	E	M	V
H	R	D	F	S	L

R̃. VI

**G**

Aude Ma- rí- a Vir- go, cunctas háe- re-ses so-

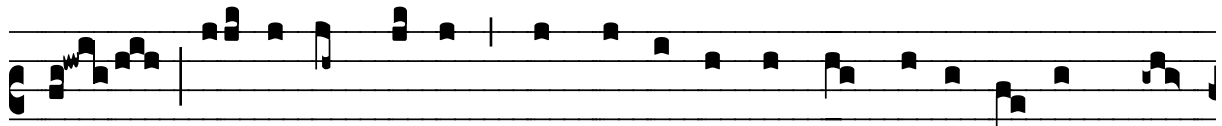
la in- ter- emí- sti, quæ Gabri- é- lis archánge- li dictis cre-

di-dí-sti, \* Dum virgo De- um et hómi-nem genu- í- sti

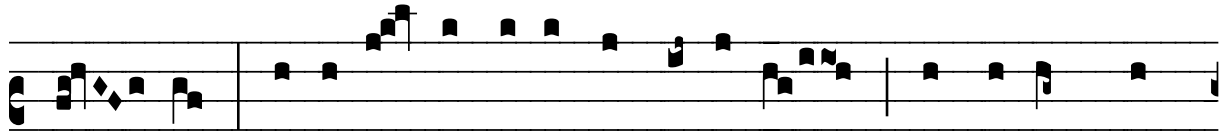
et post par- tum virgo in- vi- o-lá- ta perman- sí- sti.

Gabri- é- lem archánge-lum cré-dimus di-ví-ni- tus te es-se affá-

ŷ. Gabri- é- lem archánge-lum cré-dimus di-ví-ni- tus te es-se affá-



tum ; ú- te-rum tu- um de Spí- ri- tu Sancto cré-dimus impre-



gná- tum ; e-rubé- scat Judæ- us infé- lix, qui di-cit Chri-



stum ex Joseph sémi-ne esse na-tum. \* Dum virgo.