

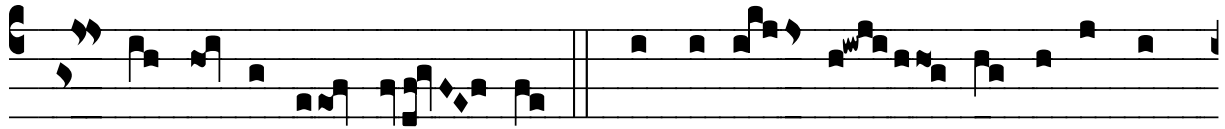
R̄. Postquam impleti sunt

H 118					
Mode	3022	Rom1	0		
CAO	7406	Rom2	0		
		B	E		V
H	R		F	S	L

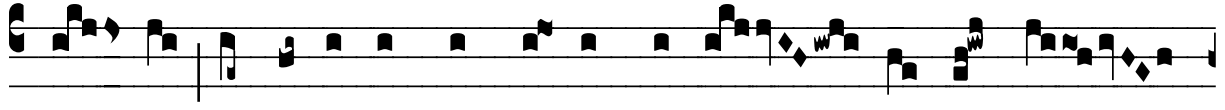
Lc 2, 22-24 Ṽ.Id., 24

R̄. III
P

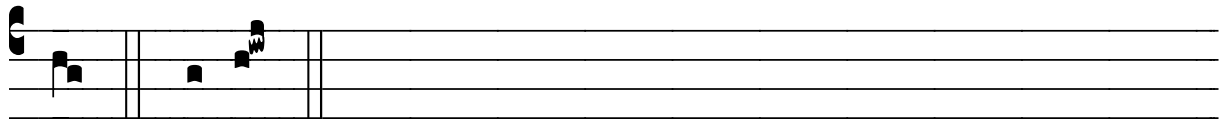
Ostquam implé- ti sunt di- es purga- ti- ó-nis
e- jus secúndum le-gem Mó- y- si, tu-lé-runt il-
lum in Je-rú-sa- lem ut síste-rent e- um Dó- mi-
no, * Sic- ut scrip- tum est in le- ge Dó-mi- ni:
Qui- a omne mascu-lí-num ad-apé- ri- ens vul- vam, sanctum



Dó- mi- no vo-cá- bi- tur. Ǻ. Obtulé- runt pro e- o Dó-



mi- no par túrtu-rum aut du- os pul-los co- lumbá-



rum. * Sic-ut.