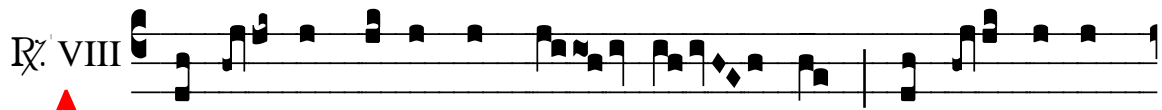


℞ Adorna thalamum tuum

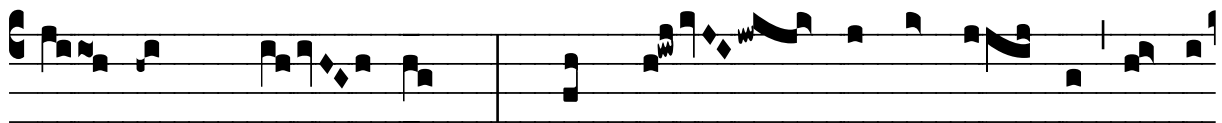
H 116					
Mode	8037	Rom1	61r		
CAO	6051	Rom2	53v		
C	G	B	E	M	V
H	R	D	F	S	L

℣ Lc 2, 28

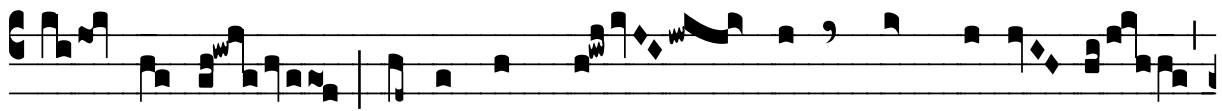


A

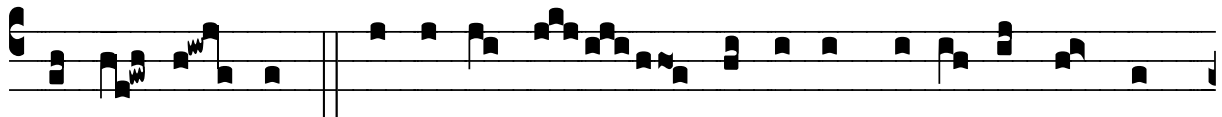
Dór- na thá-lamum tuum, Si- on, et sú- ci-pe



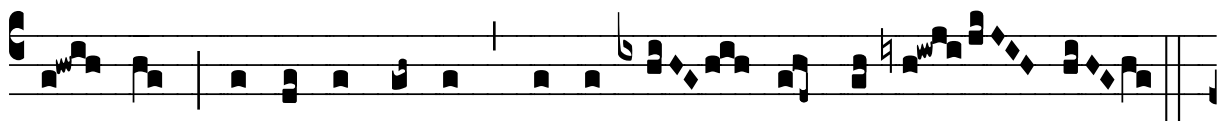
Re- gem Chri- stum, * Quem vir- go concé- pit vir-go



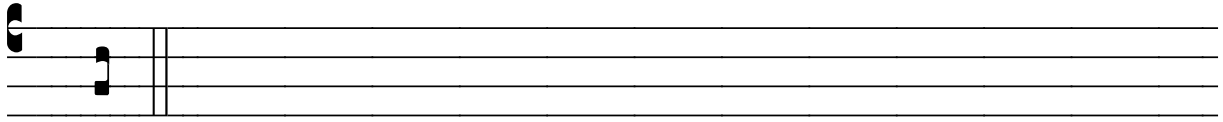
pé- pe- rit, virgo post par- tum quem génu- it



ad-o- rá- vit. ℣ Accí-pi- ens Síme- on Pú-e- rum in má-



ni- bus, grá- ti- as a-gens be-ne- dí- xit Dómi- num.



* Quem.