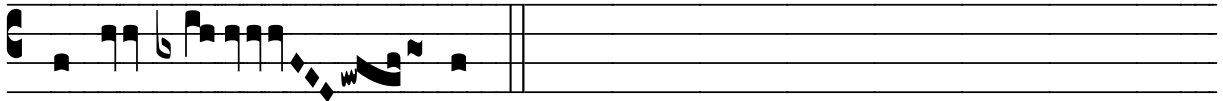


# ℞. Pulchra facie sed pulchrior

H 113					
Mode	5016	Rom1	150r		
CAO	7452	Rom2	52r		
C*	G	B	E	M	V
H	R	D	F	S	L

℣. Ps 44, 5

℞. V  
**P** Pulchra fá- ci- e, sed púl-chri- or fi- de, be-  
á- ta es A- gnes ; respú- ens mun- dum, lætá-  
be- ris cum An- ge- lis ; \* In-ter- cé- de  
pro óm-ni-bus no- bis. ℣. Spé-ci- e tu- a et pulchri-  
tú-di-ne tu- a, inténde próspe-re procé- de et re- gna.



\* Inter- cé- de.