

R̄. Beatus es tu et bene tibi

H 109					
Mode	4025	Rom1	0		
CAO	6203	Rom2	0		
		B	E		
H	R	D	F	S	L

R̄. IV

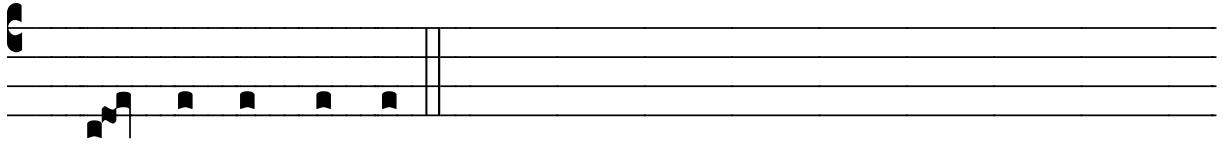
B E- á-tus es tu et be- ne ti- bi e-

rit, egré-gi- e mar- tyr Se- ba- sti- á- ne, * Qui-

a cum sanctis gaudé- bis, et cum ánge- lis exsultá-

bis in æ- tér- num. V̄. Be- á-tus es, Chri- sti martyr Se-

basti- á- ne, et be- ne- díctus sermo o- ris tu- i.



* Qui- a cum sanctis.