

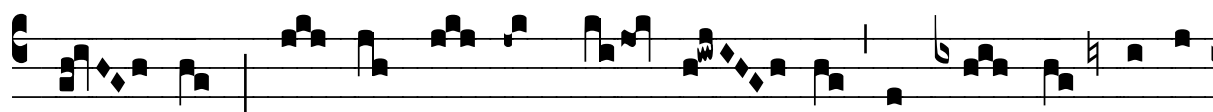
# R̃. Sebastianus Dei cultor

H 106					
Mode	8031	Rom1	57v		
CAO	7631	Rom2	49r		
	G	B	E		V
H	R	D	F	S	L

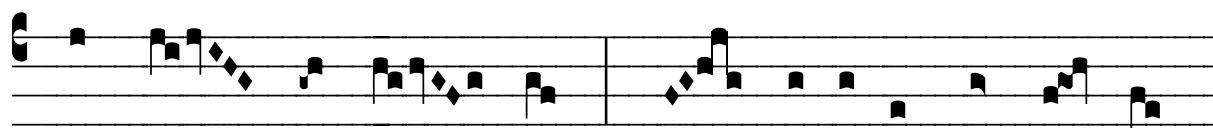
R̃. VIII



**S** Ebasti- á- nus De- i cul- tor, stu- di- ó- se cu-



rá- bat sub abscón- so chlá- my- dis sanctó- rum á- ni-



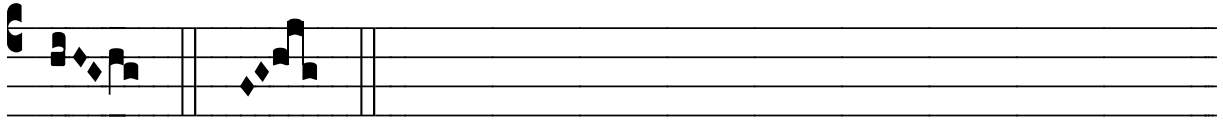
mas con- for- tá- re, \* Spem promít- tens et gló- ri-



am cónse- qui sempi- tér- nam. Ṽ. E- rat e-



nim in sermó- ne ve- rax, in ju- dí- ci- o ju-



stus. \* Spem.