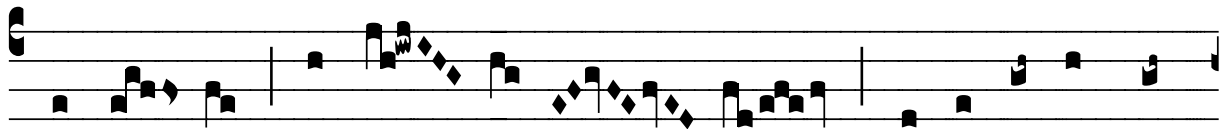


# R̄. Isti sunt sancti qui passi

H 66					
Mode	3015	Rom1	36r		
CAO	7022	Rom2	32r		
C	G	B	E	M	V
H	R	D	F	S	L



S- ti sunt sanc- ti, qui pas- si sunt prop- ter te,



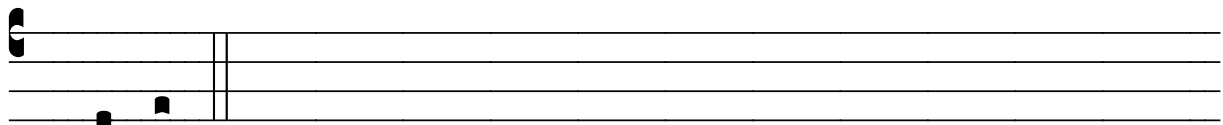
Dómi- ne : víndi- ca e- os, \* Qui- a clamant ad



te quo- tí-di- e. V̄. Vín- di- ca, Dó-mi-ne, sánqui-



nem sanctó-rum tu-ó- rum, qui effú- sus est.



\* Qui- a.