

℞. Descendit de cælis

H 45					
Mode	1009	Rom1	26r		
CAO	6411	Rom2	22v		
C	G	B	E	M	V
H	R	D	F	S	

℣. Ps 18, 6

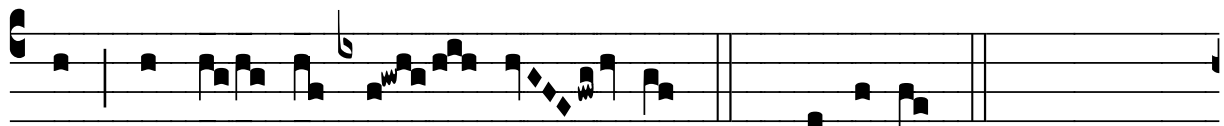
℞. I
D Escéndit de cæ- lis, mis- sus ab ar- ce

Pa- tris, intro- í- vit per aurem Vír- gi- nis in re- gi- ó-

nem no- stram, indú- tus sto- lam purpú- re- am, * Et ex- í-

vit per áure- am por- tam, lux et de- cus u- nivér- sæ

fá- bri- cæ mun- di. ℣. Tamquam sponsus Dómi- nus pro- cé-



dens de thá- la- mo su- o. * Et ex-í-vit.



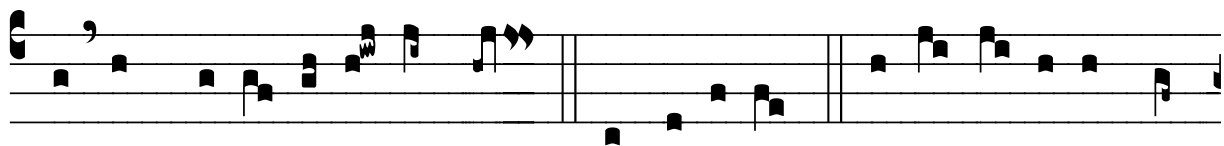
∩. Tam- quam sponsus Dómi- nus



pro-cé- dens de thá- la- mo su- o. * Et ex- í- vit.



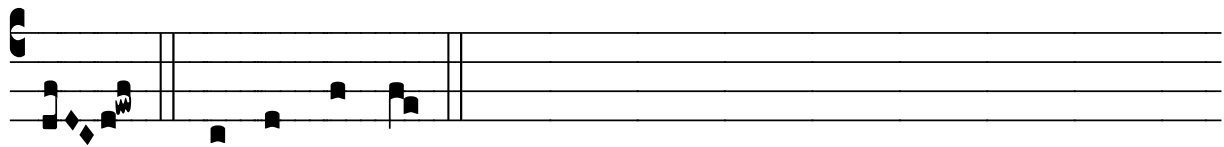
∩. Gló- ri- a Patri, et Fí- li-



o, et Spi-rí- tu- i Sancto. * Et exí-vit ∩. Sic-ut e- rat in prin-



cí-pi- o, et nunc, et sem- per, et in sœ-cu-la sœ-cu- ló- rum. A-



men. * Et ex- í- vit.