

℞. Constantes estote

H 42					
Mode	8010	Rom1	23r		
CAO	6328	Rom2	20v		
C	G	B	E	M	V
H	R	D	F	S	L

2 Chr 20, 17 ℣. Is 26, 19

℞. VIII

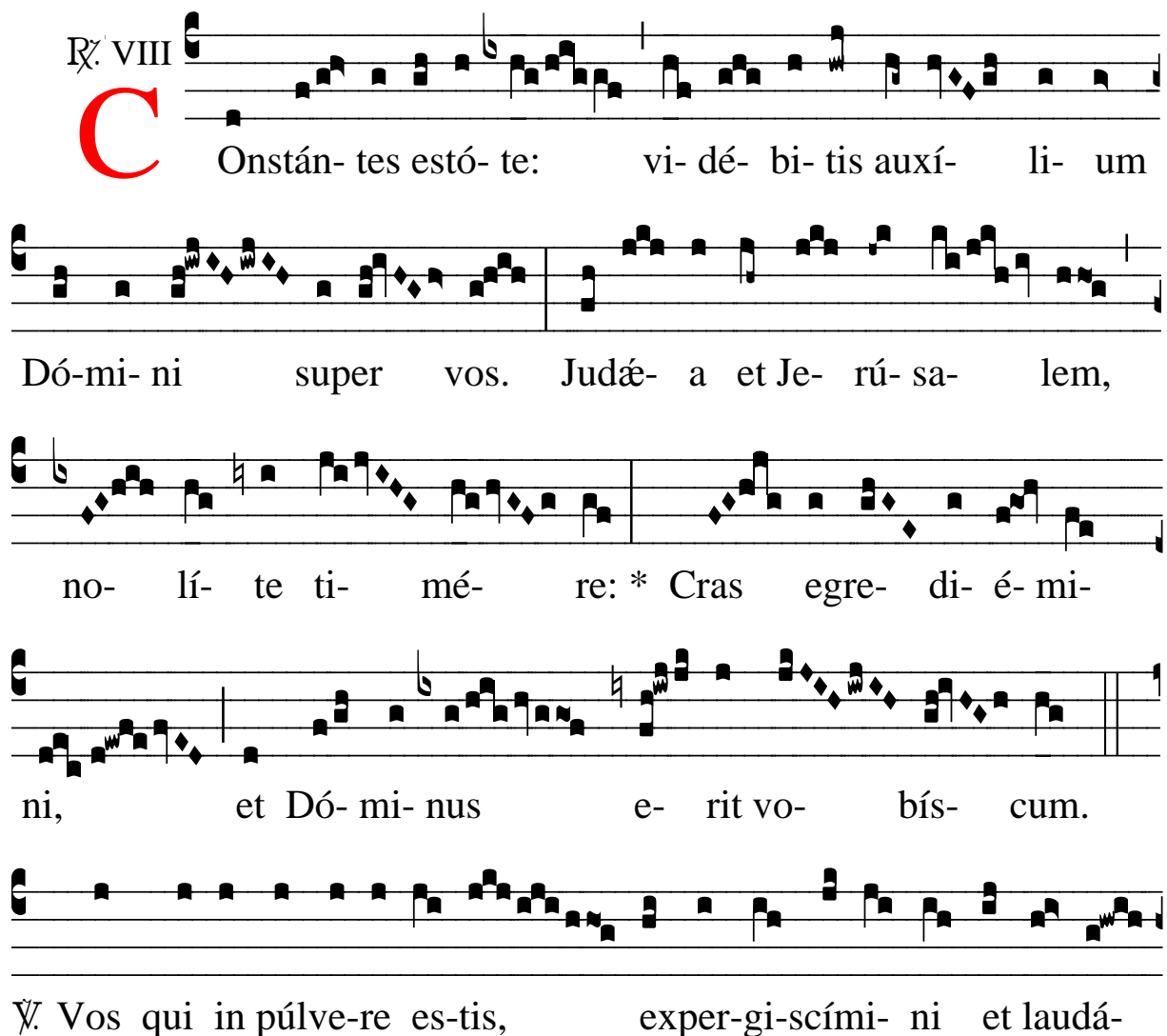
C Onstán- tes estó- te: vi- dé- bi- tis auxí- li- um

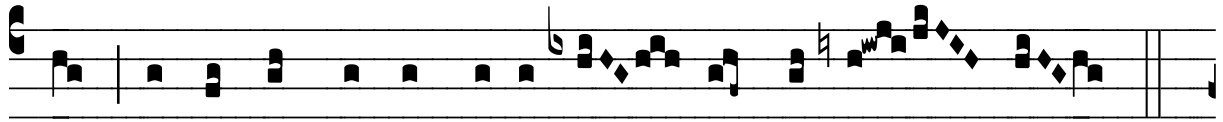
Dó-mi- ni super vos. Judáe- a et Je- rú- sa- lem,

no- lí- te ti- mé- re: * Cras egre- di- é- mi-

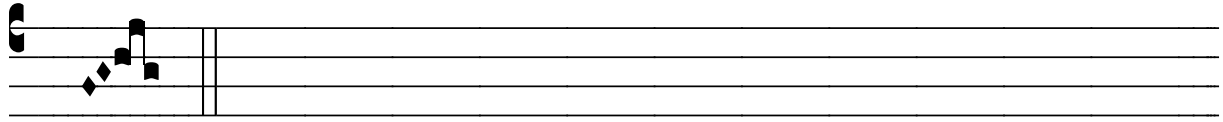
ni, et Dó- mi- nus e- rit vo- bís- cum.

℣. Vos qui in púlve-re es-tis, exper-gi-scími- ni et laudá-

The image shows a musical score for the Latin text 'Constantes estote'. It consists of five systems of music. Each system has a vocal line on a five-line staff and a corresponding Latin text line below it. The first system begins with a large red initial 'C' and the text 'Onstán- tes estó- te: vi- dé- bi- tis auxí- li- um'. The second system continues with 'Dó-mi- ni super vos. Judáe- a et Je- rú- sa- lem,'. The third system has 'no- lí- te ti- mé- re: * Cras egre- di- é- mi-'. The fourth system has 'ni, et Dó- mi- nus e- rit vo- bís- cum.' The fifth system has '℣. Vos qui in púlve-re es-tis, exper-gi-scími- ni et laudá-'. The music is written in a square-note style on a five-line staff, with a clef at the beginning of each system. There are various musical notations such as stems, beams, and accidentals throughout the score.



te: ecce Dó- mi- nus vé-ni- et cum sa- lú- te.



* Cras.