

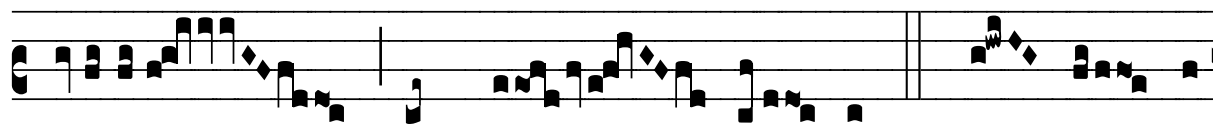
℞. Bethleem civitas

H 27					
Mode	7005	Rom1	12v		
CAO	6254	Rom2	9r		
C	G	B	E	M	V
H	R	D	F	S	L

Mic 5, 2

℞. VII
B

Ethleem cí- vi- tas De- i sum- mi, ex te éx- i-
et Domi- ná- tor Isra- el, * Et e- gréssus e-
jus sic- ut a princí- pi- o di- é- rum æ- terni-
tá- tis, et magni- fi- cá- bi- tur in mé- di- o u-
ni- vér- sæ ter- ræ : et pax e- rit in ter- ra no-



stra, dum vé- ne- rit. \forall De- us a



Lí- bano vé- ni- et, et Sanctus de monte umbró- so et



con- dén- so. * Et e- grés- sus.