

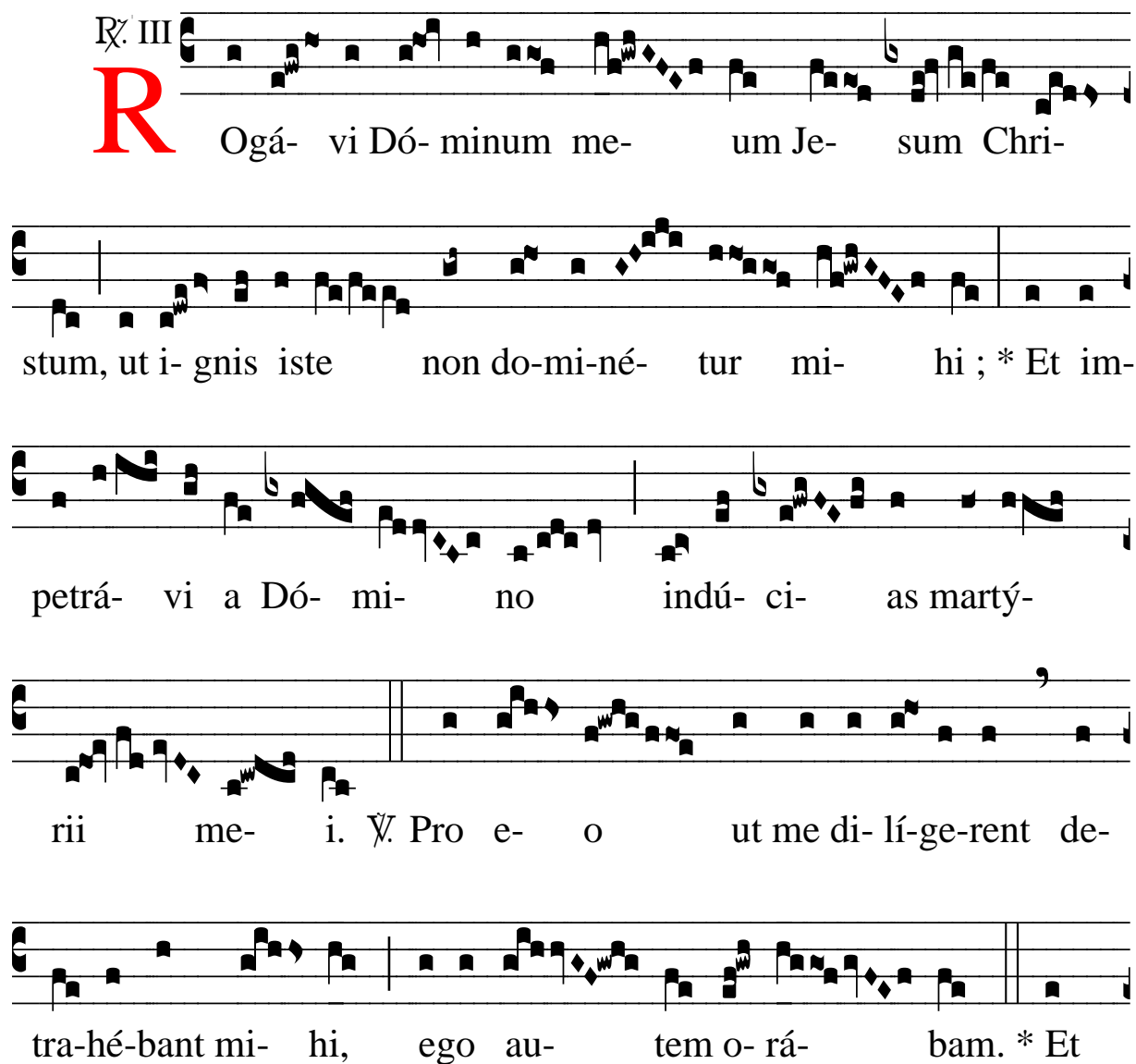
# R̃. Rogavi Dominum

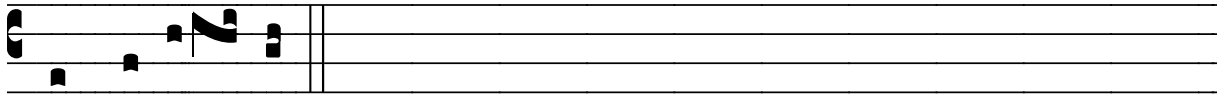
H 26					
Mode	3005	Rom1	15v		
CAO	7550	Rom2	13r		
C	G	B	E	M	V
H	R	D		S	

Ÿ. Ps 108, 4

R̃. III

**R** Ogá- vi Dó- minum me- um Je- sum Chri-  
stum, ut i- gnis iste non do- mi- né- tur mi- hi ; \* Et im-  
petrá- vi a Dó- mi- no indú- ci- as marty-  
rii me- i. Ÿ. Pro e- o ut me di- lí- ge- rent de-  
tra- hé- bant mi- hi, ego au- tem o- rá- bam. \* Et

The image shows a musical score for the Latin text 'Rogavi Dominum'. It consists of four staves of music. The first staff begins with a red initial 'R' and the text 'Rogavi Dominum meum Jesum Christum, ut ignis iste non dominetur mihi; \* Et impetravi a Domino inducias martyrii mei. Ÿ. Pro eo ut deligerent detrabant mihi, ego autem orabam. \* Et'. The music is written in a medieval style with square neumes on a four-line staff. The text is in a Gothic script. There are some red markings in the text, including the initial 'R' and the 'Ÿ' symbol.



impetrá- vi.