

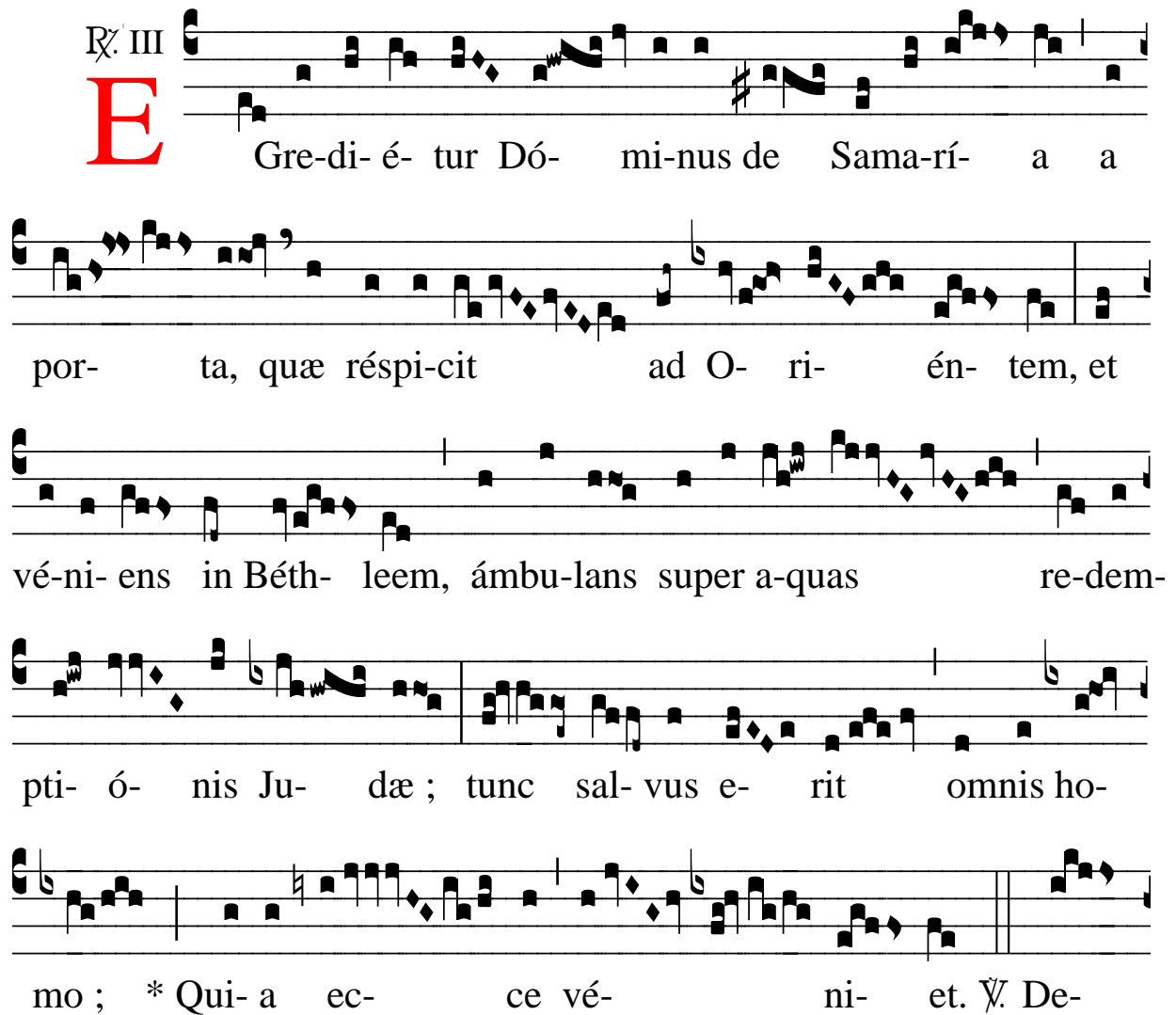
℞ Egredietur Dominus de Samaria

H 23					
Mode	3004	Rom1	9v		
CAO	6639	Rom2	7r		
C	G	B	E	M	V
H	R	D	F	S	

Ez 44, 1

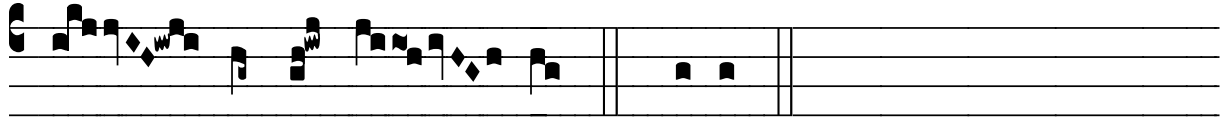
℞ III

E Gre-di-é-tur Dó-mi-nus de Sama-rí-a a
por-ta, quæ réspi-cit ad O-ri-én-tem, et
vé-ni-ens in Béth-leem, ámbu-lans super a-quas re-dem-
pti-ó-nis Ju-dæ; tunc sal-vus e-rit omnis ho-
mo; * Qui-a ec-ce vé-ni-et. ̃. De-

The image shows a musical score for a Gregorian chant. It consists of five systems of music, each with a vocal line and a corresponding Latin text line. The first system begins with a large red initial 'E'. The notation is in square neumes on a four-line staff. The text is in a Gothic script. The score ends with a double bar line and a fermata.



us a Lí- bano véni- et, et Sanctus de monte umbró-



so et condén- so. * Qui- a.