

R̄. Jerusalem plantabis

H 23					
Mode	8003	Rom1	10r		
CAO	7033	Rom2	6v		
C	G	B	E	M	V
H	R	D	F	S	

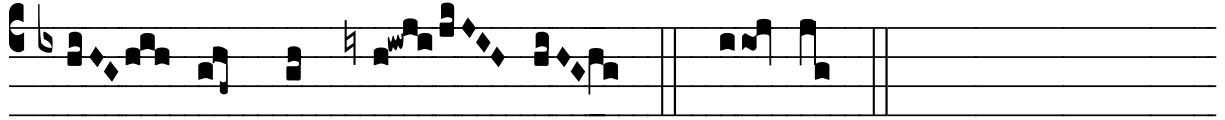
Jer 31, 5

R̄. VIII

J Erú- sa- lem, plantábis víne- am in món-
ti-bus tu- is, et exsul-tá- bis qui- a di- es Dó- mini
vé- ni- et. Surge, Si- on, convérte- re ad De-
um tu- um. * Gau- de et læ-tá- re, Ja- cob : qui- a de médi-
o gén- ti- um Salvá- tor tuus véni- et. ̄. De-



us a Lí- ba- no vé- ni- et, et Sanctus de mon- te umbró-



so et con- dén- so. * Gau- de.