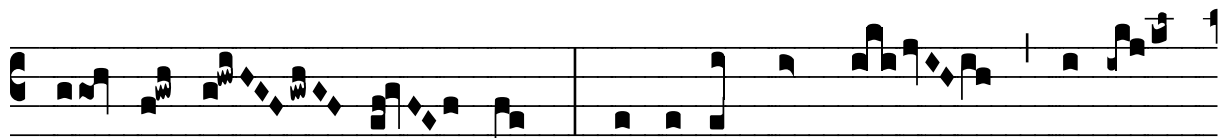


R̄. Ave, Maria

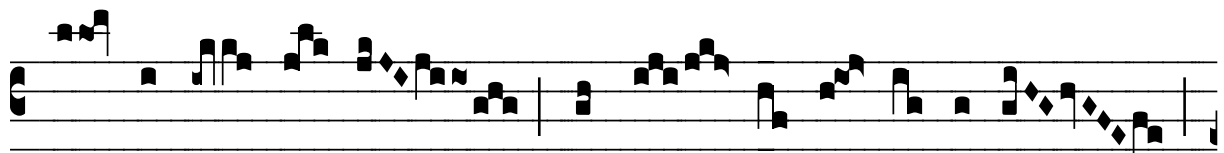
H 16					
Mode	7003	Rom1	4r		
CAO	6157	Rom2	3v		
	G	B	E	M	V
H	R	D	F	S	

Lc 1, 28.35 Ṽ. Ps 23, 7

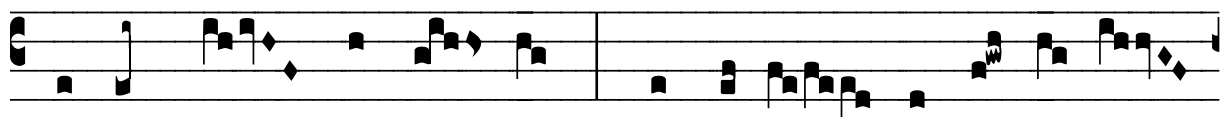
R̄. VII  **A** Ve, Ma-rí- a, grá-ti- a ple- na,



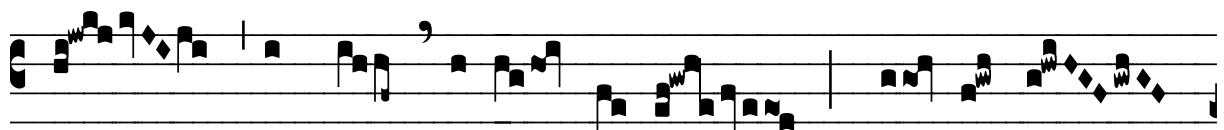
Dó- mi- nus te- cum. Spí- ri- tus Sanctus super-



vé- ni- et in te, et vir- tus Al- tís-simi



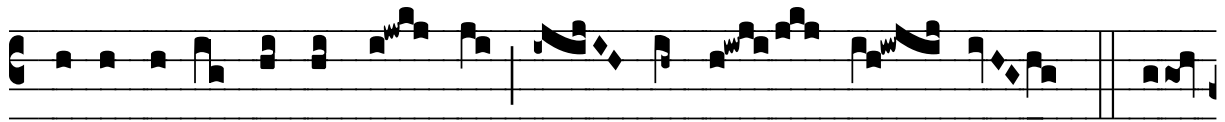
ob-umbrá- bit ti- bi ; quod e- nim ex te na- scé-



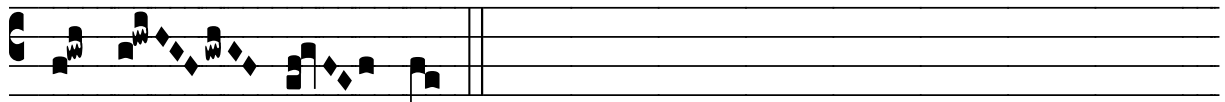
tur Sanctum vocá- bi- tur * Fí- li- us



De- i. \checkmark . Tól- li- te portas, prínci-pes, vestras, et e- levá-



mi-ni, portæ æ-terná- les, et intro- í- bit. * Fí-



li- us De- i.