

R̄. Missus est

H 16					
Mode	7002	Rom1	4r		
CAO	7120	Rom2	3r		
	G	B	E	M	V
H	R	D	F	S*	L*

Lc 1, 26-27.30.32 V̄. Id., 28

R̄. VII

M

Issus est Gábri-el An-ge-lus ad Ma-rí-am Vír-

gi-nem desponsá-tam Jo-seph, núnti-ans e-i ver-

bum ; et expa-véscit Vir-go de lú-mi-ne. Ne

tí-me-as, Ma-rí-a, inve-ní-sti grá-ti-am apud Dó-

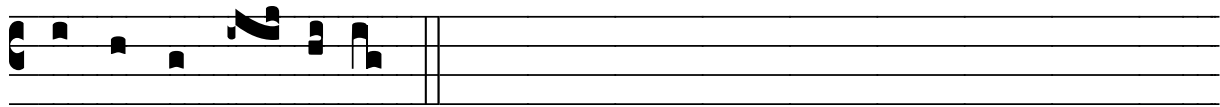
mi-num, * Ecce concí-pi-es et pá-ri-es, et vo-



cá- bi- tur Altís- si- mi Fí- li- us. \forall . A-



ve, Ma-rí- a, grá- ti- a ple- na, Dó- mi- nus te- cum.



* Ecce concí- pi- es.