

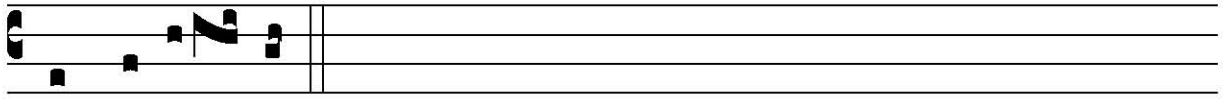
Rogavi Dominum

H 26					
Mode	3005	Rom1	15v		
CAO	7550	Rom2	13r		
C	G	B	E	M	V
H	R	D		S	

Ps 108,4

Rogavi Dominum meum Jesum Christum, ut ignis iste non dominetur mihi; * Et impetravi a Domino inducias martyrii mei. Ps. Pro eo ut deligerent detrahebant mihi, ego autem orabam. * Et

The image shows a musical score for the hymn 'Rogavi Dominum'. It consists of five staves of music. The first staff begins with a red initial 'R' and the text 'Rogavi Dominum meum Jesum Chri-'. The second staff continues with 'stum, ut ignis iste non do-mi-né- tur mi- hi; * Et im-'. The third staff continues with 'petrá- vi a Dó- mi- no indú- ci- as martý-'. The fourth staff continues with 'rii me- i. Ps. Pro e- o ut me di- lí-ge- rent de-'. The fifth staff continues with 'tra- hé- bant mi- hi, ego au- tem o- rá- bam. * Et'. The music is written in a square-note style on a four-line staff, with a treble clef and a common time signature. There are various musical ornaments and accidentals throughout the score.



impetrá- vi.